

# INEX > WALLBOARD™

## CLEAR COAT GUIDE

This sheet provides the procedures for clear coat application for **INEX > WALLBOARD**.

### Step 1: Clean Boards and Determine if coating to be CLEAR or STAINED

**INEX > WALLBOARD** is a product in appearance with different levels of tone and variance of tone. So we have a couple of options for the coating – CLEAR or with a slight STAIN and you or your client must review the sheets to assess if you wish them to be clear coated or tinted.

- Brush off any dust.
- Any surface blemishes or minor scratches can be removed with an 80 grit orbital sander.
- Wipe clean with a solution of 1 part white vinegar and 4 parts water. Wipe off with only water and leave to dry.

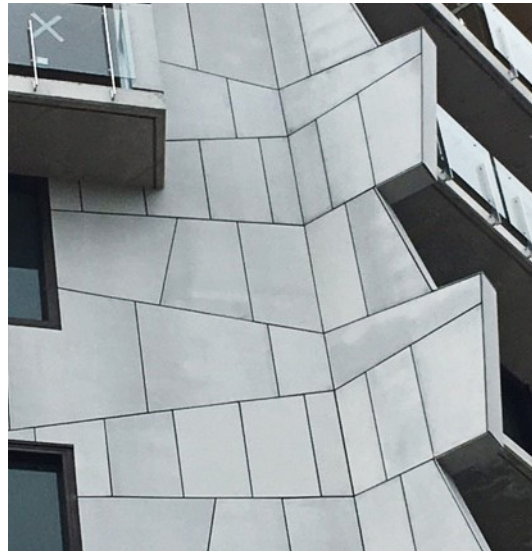
The vinegar solution is designed to clean off any efflorescence that may be on the surface.

Efflorescence is characterised as a white powder type material on the surface. It is inevitable for any raw concrete material and once cleaned off and the surface sealed it will not return.

Determine if a CLEAR finish or slightly STAINED finish is required.



Clear Seal



Stained Seal

### Step 2: System

SI-Rex-TD from Klaas Coatings <http://www.klaascoatings.com.au/>

Contact: Jason Klaas 0414 360 753.

This is a 2 coat system – coverage approximately 10 litres/m<sup>2</sup>/coat.

Available as CLEAR or STAINED with 1:15 mix with 'MgO Steel Grey' which will tone down the colour variations, whilst at the same time retaining translucency. The product should be ordered direct from Klaas Coatings.

#### Klaas Coatings Si-Rex-TD

This coating system has been extensively tested by Klaas Coatings and approved for all façade **INEX > BOARDS**. Warranty for the coating system is provided by Klaas Coatings.

The STAINED option will deliver a more matt finish than the CLEAR coating. Should a higher sheen be desired with the STAINED option then an additional coat of the CLEAR can deliver this.

The STAINED coating is mixed to a concentration of 1:15. If a greater level of staining is desired then further coats can be applied.

The 'MgO Steel Grey' stain colour has been specially formulated to match the general colour of **INEX > BOARDS**. Klaas Coatings can provide a wide range of other staining colours if desired.

### Step 3: Apply First Coat prior to Assembly

Prior to assembly, prepare the surfaces and apply the first coat over all boards – front and sides ensuring the T&G and cut edges are well sealed.

Use a micro fibre low to medium nap roller – 6mm.

If applying the STAINED option:

- Ensure the pot remains well mixed during application as the staining particles are suspended in the mixture.
- Apply with the roller over the full surface and then immediately roll off with a dry roller using a light pressure to ‘massage’ over the surface to eliminate any roller marks. This will ensure that an even spread of the stain is achieved.

### Step 4: Assemble the Boards

Pre-counter sink all fixing points to ensure a neat exposed screw fixing.

Or alternatively you might choose to use button head or bugle head screws.

### Step 5: Apply Second Coat

#### **AFTER ASSEMBLY YOU NEED TO APPRECIATE THAT THE SYSTEM IS NOT YET FULLY SEALED.**

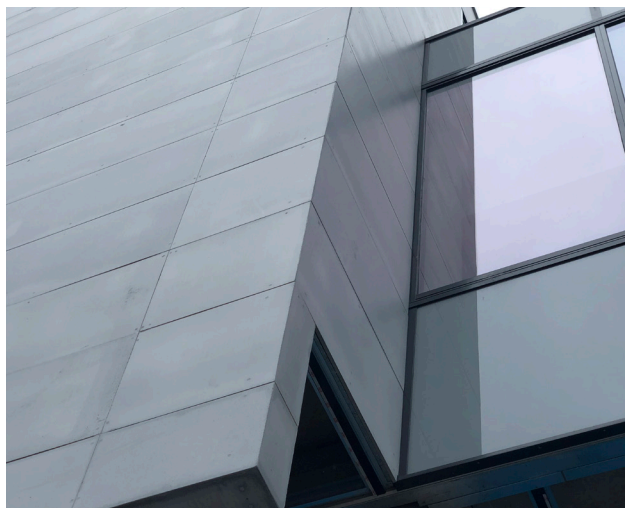
In particular, all ‘V’ or butt joints, screw points, cut edges to openings or joins to other materials etc., will be prone to wet weather water penetration and/or absorption of moisture from the ambient atmosphere in humid or dew conditions

Water penetration can cause a darkening of the board and should be avoided as even after the boards dry out some residual change of tone can remain. So immediately following installation:

- Caulk all ‘V’ joints with **INEX>BOND** or another grey sealer such as Sikaflex, or a similar product.
- Caulk joins to CNR angles and any other areas such as around openings or joins to other materials.
- Apply the second coat ensuring local flooding to all fixing points.

If using the STAINED coating; back roll with a dry roller as before.

If application of the second coat cannot be undertaken immediately we recommend completing the caulking and locally spot sealing the fixing points in the interim.



#### **IMPORTANT NOTE:**

##### **1. INEX>WALLBOARD with a CLEAR FINISH**

Whilst **INEX>WALLBOARD** is used as a cladding product for painted finish, it can also be treated with a suggested clear finish to retain its raw concrete appearance. Due to the cementitious nature of **INEX>BOARDS** some superficial pin holing may occur and the smooth side is characterised as CLASS 2 concrete finish. To assist specifiers and installers to achieve the best outcome for **INEX>WALLBOARD** with a clear finish, the specific documents are provided under the ‘COATINGS’ section of our website.

##### **2. WARRANTY Information**

Common installation errors that will void your warranty include, but are not limited to: failing to properly seal screw holes and incorrect distance between studs. UBIQ does not provide warranty for any suggested coating systems for **INEX>WALLBOARD**.

##### **3. COATING WARRANTY Information**

The purchaser must contact the coating suppliers for warranty purposes. The purchaser accepts all risk associated with performance of any coatings applied to **INEX>WALLBOARD**. UBIQ recommends the coatings are tested prior to installation.