

INEX > MAXIDECK™

DECKING SOLUTIONS



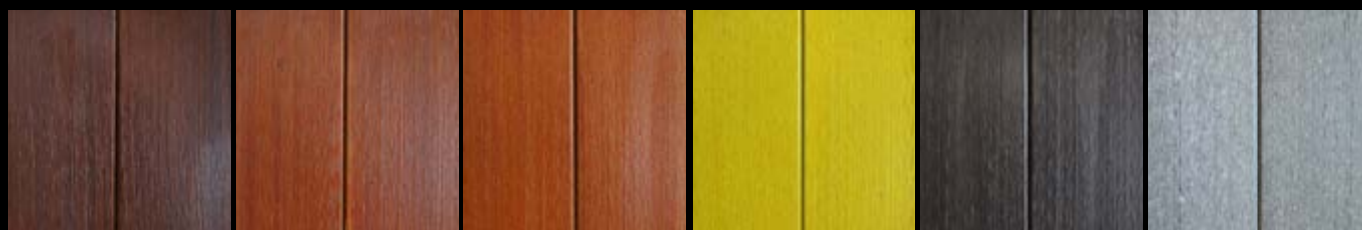
INEX > BOARDS™

ANY BUILDING • ANY SURFACE • ANYWHERE

INEX>MAXIDECK is a unique Engineered Cementitious Composite (ECC) material; an advanced low carbon concrete developed by UBIQ and containing up to 60% of post-industrial recycled materials. Now delivered in 600mm wide with 5x120mm wide individual decking boards profiled ready to take a huge range of approved coatings from timber stains to more solid paints. No speciality tools or fixings are required to install **INEX>MAXIDECK**, which can be cut like any other comparable fibre cement product. Each sheet comes with a tongue and groove edge for a tight fit and with routed 'V' grooves on its surface for that 'decking boards' appearance, but without the need to fix individual boards. An **INEX>MAXIDECK** deck can be fixed in 20% of the time of a typical deck.

Critically, **INEX>MAXIDECK** has been tested and is deemed non-combustible and approved for use in all Bush Fire Prone Zones; including the highest Bushfire Attack Level – Flame Zone (BAL-FZ). So it is now possible to have that 'timber deck' in the bush again, and as a sheet material **INEX>MAXIDECK** meets the Bush Fire requirement that demands that individual decking boards cannot be spaced with gaps in-between them.

Whether your selection of decking material be governed by; **Time & Cost, Appearance, Durability or Bush Fire Building Codes** – **INEX>MAXIDECK** delivers.



CONTENTS

INEX>MAXIDECK Product Information	3
INEX>MAXIDECK Physical Properties	5
INEX>MAXIDECK Installation (Incl. BAL-40 & BAL-FZ)	6
INEX>BOARDS Other Products in the Range	9

PRODUCT INFORMATION

Save up to 80% of Decking Installation Time

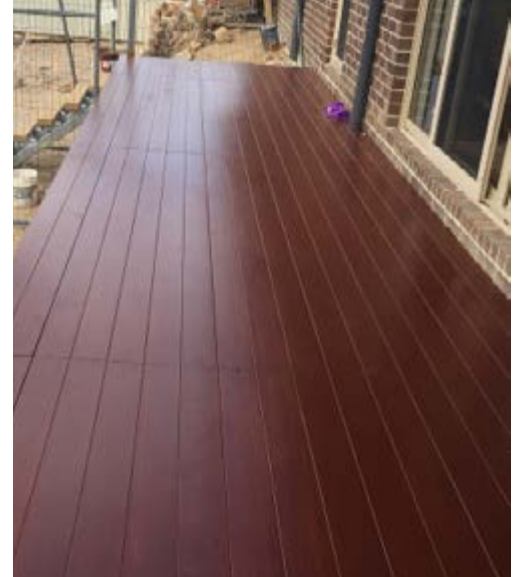
INEX>MAXIDECK is a unique engineered cementitious composite Tongue and Groove (T&G) decking sheet.

The textured surface of **INEX>MAXIDECK** provides a superb surface for a wide range of approved coating systems.

INEX>MAXIDECK is 'decking by the sheet' and comes with grooves routed into its surface to deliver an authentic decking board appearance without the fuss of having to lay individual decking boards.

Each **INEX>MAXIDECK** sheet represents 5 x 120mm wide individual decking boards, thereby cutting the installation time to less than 20% of what it would be if individual boards were used.

INEX>MAXIDECK is suitable for all decking applications, where the required Live Load is not greater than 2.7kN.



PRODUCT	LENGTH (mm)	WIDTH (mm)	THICKNESS (mm)	Kg/m ²	Kg/Sheet
INEX>MAXIDECK	2700	600	16	20.7	34

WEIGHT

At Approx. 34kg per sheet **INEX>MAXIDECK** is relatively light weight and easy to handle on site.

HIGH PERFORMANCE

INEX>MAXIDECK can be cut and worked just like comparable fibre cement sheets, but offers improved bending strength characteristics and finish quality. **INEX>MAXIDECK** spans over joists at maximum 450mm centres.

BAL-FZ & NON-COMBUSTIBILITY

INEX>MAXIDECK is non-combustible and is approved for all Bushfire Attack Levels including BAL-FZ*.

As there is no spacing between individual decking boards, **INEX>MAXIDECK** is BAL-FZ compliant in accordance with AS3959-2009 *construction of buildings in bushfire prone zones*.

**BAL-FZ (Flame Zone) is the highest Bushfire Attack Level where there is an extremely high risk of ember attack and burning debris ignited by windborne embers, and a likelihood of exposure to an extreme level of radiant heat and direct exposure to flames from the fire front.*

MATERIAL

INEX>MAXIDECK is an advanced high strength, low carbon fibre reinforced Engineered Cementitious Composite (ECC) product, containing 60% of post industrial recycled materials and is toxin free.

DURABILITY

INEX>MAXIDECK is highly durable and represents a real alternative to natural timber. **INEX>MAXIDECK** can be coated to achieve the timber look, without the ongoing maintenance issues of natural timber.



INEX>MAXIDECK can be used for all decking applications, including all Bushfire Attack Levels.

SUPERIOR FINISH

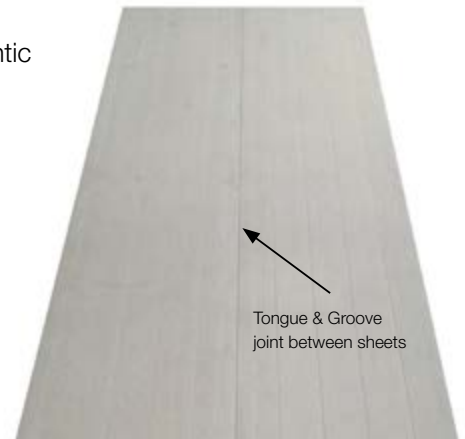
UBIQ's unique textured surface allows for complete flexibility of finishes; from an authentic natural timber appearance to a multitude of other staining and painting options.

If a real natural timber appearance is desired then this can be readily achieved with a reduction of the long term maintenance issues of timber itself.

Refer to the COATINGS menu on UBIQ's website for information regarding approved coating systems.

VALUE

INEX>MAXIDECK is an affordable substitute to hardwood and / or other decking composites. Each **INEX>MAXIDECK** represents 5 x 120mm wide individual decking boards, thereby cutting the installation time to 20% of what it would be if individual boards were used.



INEX>MAXIDECK in the raw.

MOISTURE RESISTANCE

INEX>MAXIDECK is moisture resistant and retains its structural integrity when subjected to multiple soak/dry cycles in accordance with clause 8.2.5 of AS/NZS 2908.2 2000 'Cellulose-cement products Part 2: Flat sheets'.

LOW CARBON

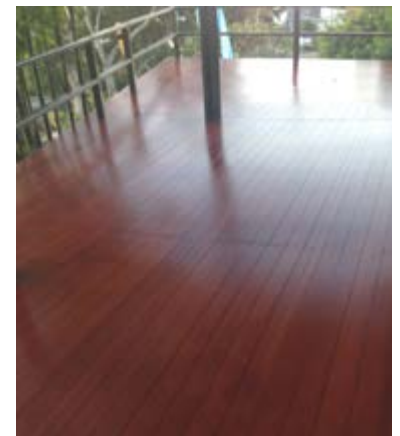
INEX>MAXIDECK is a low carbon product containing about 40% of the embodied energy of equivalent portland cement derived products, containing 60% of post industrial recycled materials. It is 100% recyclable.

ASBESTOS AND TOXIN FREE

INEX>MAXIDECK does not contain any toxins and is asbestos free.

MOULD & TERMITE RESISTANCE

INEX>MAXIDECK is resistant to mould and termite attack.



INEX>MAXIDECK installed and coated

Note: UBIQ's concrete is a natural product and UBIQ sees it as such, with all its vital signs and characteristics. Each **INEX>MAXIDECK** sheet is regarded as a single piece, just like natural timber. Efflorescences or small, visible pores or patches are not defects. They add to the character of the final finished and stained product. Differences in the surface appearance, which do not affect the fit for purpose of the panels, are permitted. The surface is not homogenous and the variations and texture are what deliver the remarkable appearance once these coatings are applied. They are what set these sheets apart from other composite decking products.

PHYSICAL PROPERTIES

INEX>MAXIDECK is an advanced high strength, fibre reinforced Engineered Cementitious Composite (ECC) product, containing 60% of post-industrial recycled materials.

INEX>MAXIDECK is suitable for domestic and commercial applications and is manufactured to conform to the following requirements and standards.

DIMENSIONAL AND GEOMETRICAL CHARACTERISTICS		
GEOMETRICAL TESTS	EQUILIBRIUM CONDITION	STANDARD
Length, Width, Thickness, Straightness	PASS	AS/NZS 2908.2
PHYSICAL CHARACTERISTICS		
APPARENT DENSITY TEST	kg/m³	STANDARD
16mm INEX>MAXIDECK	1275	AS/NZS 2908.2 - Clause 5.2.2 - test method 8.2.1
SPAN & LOADING PROPERTIES		
THICKNESS/JOIST SPACING (mm)	UNIFORMLY DISTRIBUTED LOAD (kPa)	LIVE LOAD or CONCENTRATED ACTION (kN)
16mm/450mm	10.0	2.7
STRENGTH		
CHARACTERISTIC TYPE TEST	STANDARD	
Bending Strength (Mean)	>25MPa	AS/NZS 2908.2 - Clause 6.1 - test method 8.2.1
Modulus of Elasticity (GPa) Both dry and wet conditions	>8GPa	AS 1774.31.1-2000
DURABILITY, MOISTURE RESISTANCE AND CORROSION		
CHARACTERISTIC TYPE TEST	STANDARD	
Water Permeability	PASS	AS/NZS 2908.2 - clause 6.2 - test method 8.2.2
Frost Resistance	PASS	AS/NZS 2908.2 - clause 6.3 - test method 8.2.3
Heat-rain	PASS	AS/NZS 2908.2 - clause 6.5 - test method B.5
Soak-dry	PASS	AS/NZS 2908.2 - clause 6.6 - test method 8.2.5
Corrosion	Corrosion Tests undertaken by SGS Australia Pty. Ltd. demonstrate that INEX>MAXIDECK does not accelerate corrosion on stainless steel fasteners & fixings.	
THERMAL PROPERTIES		
CHARACTERISTIC TYPE TEST	STANDARD	
Thermal Conductivity	0.179 W/m.K	AS/NZS 4859.1
R-Value at 16mm Thickness	0.09 m ² .K/W	AS/NZS 4859.1
Flammability Index	1	AS 1530.2-1993
Ignitability Index	0	AS/NZS 1530.3:1999
Spread of Flame Index	0	AS/NZS 1530.3:1999
Heat Evolved Index	0	AS/NZS 1530.3:1999
Smoke Developed Index	1	AS/NZS 1530.3:1999
Combustibility	PASS - Not deemed Combustible	AS 1530.1-1994 - clause 3.4 AS/NZS 3837:1998 Building Code of Australia - Specification A2.4
SLIP RESISTANCE WITH RECOMMENDED COATINGS SYSTEM		
TEST TYPE	CLASSIFICATION	STANDARD
Wet Pendulum (INEX>MAXIDECK with coating)	P5	AS/NZS 4586:2013 (Table 2)
Coating System: 1 coat of ULTRA BOND primer / sealer, 2 x COATS OF ULTRA CLEAR ANTI-SLIP (1st & 2nd Coats), and final coat of ULTRA CLEAR 65.		
INEX>MAXIDECK is provided with first coat pre-applied and further coat products provided by ULTRA LAST, 155 King St, Mascot NSW 2020, Phone: +61 2 8338 9997.		
OTHERS		
MATERIAL TEST	STANDARD / METHOD	
Asbestos	PASS - Asbestos Free	AS 4964-2004
Fungal Resistance	PASS – No growth	ASTM C1338-08
VOC Emission	Very Low (0.053mg/m ² /hr)	ASTM D5116

INSTALLATION (INCL. BAL-40 & BAL-FZ)

BAL-FZ (& BELOW) COMPLIANCE

INEX>MAXIDECK is a unique engineered cementitious composite material which has been tested for Combustibility under Australian Standard *AS/NZS 1530.1:1994 Part 1: Combustibility test for materials* and has been deemed Non-combustible. This is the standard of non-combustibility that is required by the Australian Standard AS 3959-2009 Construction of buildings in bushfire-prone areas – clause 1.5.19 Non-Combustible.



The Australian Standard *AS 3959-2009 Construction of buildings in bushfire-prone areas* requires certain performances of building materials for various determined levels of Bushfire Attack Level (BAL). This standard currently comprises six categories, namely BAL-LOW, BAL-12.5, BAL-19, BAL-29, BAL-40 and BAL-FZ.

As there is no spacing between individual decking boards, **INEX>MAXIDECK** can be used in all bushfire-prone areas and this document outlines how it can be used in both BAL-40 and BAL-FZ construction.

INEX>MAXIDECK is a unique engineered cementitious composite material in a tongue and grooved sheet and “V” groove form to deliver an easy fix decking product. The ‘**COATINGS**’ section of UBIQ’s website provides you with many approved options for stain products that can be applied to deliver a range of finishes. Download and read carefully the relevant document(s) for your preferred coating system.



Follow these 4 steps to achieve an attractive and long lasting finish for your deck.

4 STEP GUIDE FOR YOUR INSTALLATION & COATING SYSTEM

STEP 1 – PLAN YOUR DECK AND PREPARE YOUR INEX>MAXIDECK SHEETS

Select your construction materials (timber or steel joists) and your preferred coating system. We recommend that your joists allow for a slight fall in the direction of the sheets and away from the building to allow surface water to run off.

When storing **INEX>MAXIDECK** on site ensure they are stored flat and under cover in a well ventilated space. Review the application recommendations of the coating company prior to commencing your coating. Do not apply if temperatures are below 10°C or in high humidity.

STEP 2 – COAT ALL EDGES PRIOR TO FIXING

Apply a single first coat to **ALL EDGES** (ends and tongue or groove sides) of your **INEX>MAXIDECK** prior to fixing. Use a brush to ensure all parts of the tongue and groove sides are fully coated and are allowed to dry prior to fixing. Again, review the application recommendations of the coating company prior to commencing coating. Do not apply if temperatures are below 10°C or in high humidity.

STEP 3 – FIX YOUR BOARDS AND TOUCH UP ANY CONSTRUCTION CUTS

Apply a 6mm bead of **INEX>BOND** to each joist and a 2mm to 3mm bead to the tongue and groove joints prior to fixing. Use a pre-drill and countersinking tool as part of your fixing process. Take care not to overdrive the screws as this may result in some chipping of the surface.

At this stage any construction cuts or chips that expose the grey or raw part of your sheets need to have the first coat re-applied to that area prior to fixing.

STEP 4 – SUBSEQUENT COATS

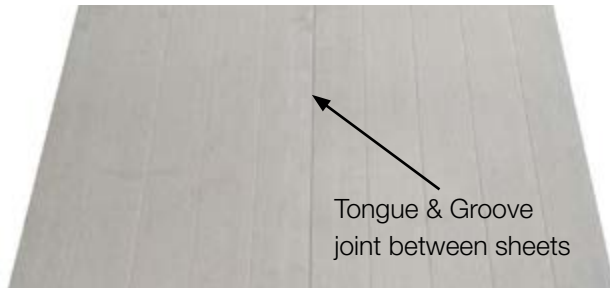
These coats should be applied within 2 weeks. Do not apply if temperatures are below 10°C or in high humidity. Your first coat can be applied with a foam roller or spay and then use a brush to lay off in the direction of the grooves. The second coat will be another coat of your selected stain and this should be applied with a brush. Careful application of this coat and laying off in the direction of the boards will achieve the best results for you. We recommend that you trial a small test area first to establish the rate of application suitable for the desired effect. Again, review the application recommendations of the coating company prior to commencing coating for which the first coat must be applied immediately, with subsequent coats within 2 weeks of fixing. Always ensure your sheets are; dry, clean and dust free prior to any coat.

Ensure that all screw heads are sealed with these subsequent coats. **INEX>MAXIDECK** may absorb moisture and while this will not affect the structural performance of the board, it may result in a small amount of discolouration. This discolouration will fade away as the board dries out, though sealing the heads will minimise the risk

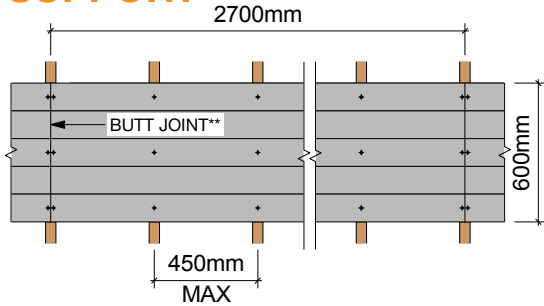
IMPORTANT NOTE FOR COATING WARRANTY

1. Common installation errors that will void your warranty include, but are not limited to: failing to properly seal screw holes and incorrect distance between joists. UBIQ does not provide warranty for any recommended coating systems for **INEX>MAXIDECK**.
2. The purchaser must contact the coating suppliers for warranty purposes. The purchaser accepts all risk associated with performance of any coatings applied to **INEX>MAXIDECK**. UBIQ recommends the coatings are tested prior to installation.

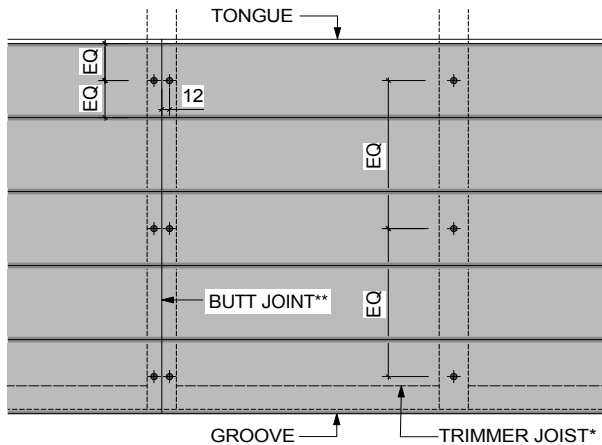
PRODUCT



SUPPORT



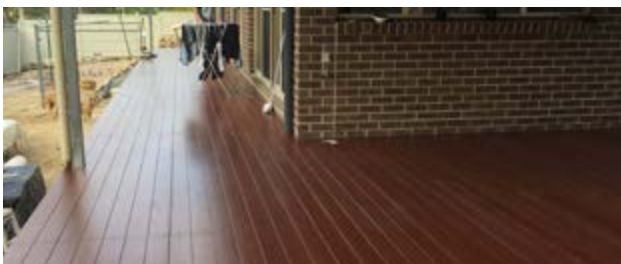
FIXING



*All frame edges must have trimmer joists as support.

Figure 1

APPLICATION



FINISHES

If a natural timber appearance is desired then **INEX>MAXIDECK** offers the perfect solution, and comes with a reduction of the long term maintenance issues of timber itself. UBIQ's unique textured surface on **INEX>MAXIDECK** allows for complete flexibility of finishes to be achieved; from an authentic natural timber appearance to many other staining or painting options.

For further details of approved coating options refer to the COATINGS menu at: www.ubiq.com.au.

Note: UBIQ's concrete is a natural product and UBIQ sees it as such, with all its vital signs and characteristics. Each **INEX>MAXIDECK** sheet is regarded as a single piece, just like natural timber. Efflorescences or small, visible pores or patches are not defects. They add to the character of the final finished and stained product. Differences in the surface appearance, which do not affect the fit for purpose of the sheets, are permitted. The surface is not homogenous and the variations and texture are what deliver the remarkable appearance once these coatings are applied. They are what set these sheets apart from other composite decking products.

WEIGHT

At Approx. 34kg per sheet **INEX>MAXIDECK** is relatively lightweight and easy to handle on site.

LOADING

INEX>MAXIDECK is suitable for all decking applications, where the required Live Load is not greater than 2.7kN.

STORAGE

INEX>MAXIDECK should be stored dry, flat and with all edges protected from damage. We recommend storage undercover and raised from the ground. Do not store **INEX>MAXIDECK** vertically.

FRAMING

In BAL-40 or BAL-FZ construction **INEX>MAXIDECK** can be fixed to either timber or steel joists; depending on whether the deck or verandah subfloor space is enclosed – SEE DIAGRAM BELOW.

Timber framing must be in accordance with AS 1684 – 'Residential timber-framed construction'.

Steel framing must be in accordance with AS 3623 – 'Domestic metal framing'.

ASSEMBLY

Apply a 6mm bead of **INEX>BOND** to each joist and a 2mm to 3mm bead to the tongue and groove joints prior to fixing. 5mm wide control Joints are to be installed at every third sheet butt joint.

INEX>MAXIDECK can be fitted to a square or staggered layout.

FIXINGS:

Ensure all fixings are located according to Figure 1 and all holes are pre-drilled and countersunk. Most self-embedding screws will countersink neatly into **INEX>MAXIDECK**. However due to the cementitious nature of **INEX>BOARDS** if the correct pressure and torque is not applied there may be some surface blow out of the material, particularly at screw points close to the edges or ends of the material. This can be alleviated by pre-drilling a nominal 2mm to 3mm deep hole of the approximate screw head diameter at the screw point.

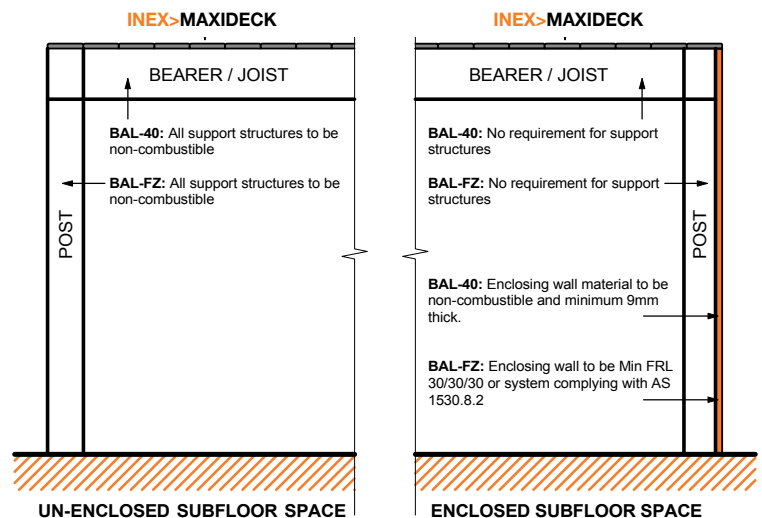
FIXINGS – TIMBER JOISTS – Class 3 galvanized fixing or higher*.

Screws: 10g x 50mm self embedding countersunk head screws.

FIXINGS – STEEL JOISTS – Class 3 galvanized fixing or higher*.

Screws: 10g x 40mm self-drilling, self-embedding, countersunk head screws.

*Stainless Steel (only for timber joist) or Class 4 galvanised screws for sea spray zone in accordance with AS 3566.



This diagram outlines the requirements under AS 3959-2009 Construction of buildings in bushfire-prone areas for the framing of verandas, decks, steps, ramps or landings for either BAL-40 or BAL-FZ construction.

INSTALLATION EQUIPMENT

UBIQ recommends the following equipment and accessories for the installation of **INEX>MAXIDECK**:

STORAGE: **INEX>MAXIDECK** must be stored flat and in a well ventilated covered and dry area.

GENERAL: **INEX>MAXIDECK** can be machined and worked in same way as comparable fibre cement sheeting.

CUTTING: **INEX>MAXIDECK** should be cut using a mechanical drop saw with a fitted dust extraction system. To achieve the best cutting results, use a diamond edge blade similar to that used to cut softer brick or stone or a specific cutting blade for fibre cement sheets. See also Health & Safety section below.

SCREW FIXING: Use a cordless drill or automatic screw gun. **INEX>MAXIDECK** must be fixed to joists by screw fixings. We recommend using a pre-drilling and countersinking tool as the best method of fixing.



Important Notes:

Ensure all components are compatible with each other and suitable for **INEX>MAXIDECK** and/or the intended surface finish.

Failure to install, finish or maintain this product in accordance with relevant building codes, regulations, standards and UBIQ's current published instructions may lead to personal injury, affect system performance, violate local building codes, and possibly void the product warranty.

HEALTH & SAFETY

UBIQ advises that **INEX>MAXIDECK** contains fibreglass reinforcing and causes fine dust when cutting or machining. Continuous or excessive inhalation of fine dust containing fibreglass particles can cause irritation and may cause lung scarring (silicosis). Exposure to such dust may cause irritation to the skin or other body surfaces.

When cutting **INEX>MAXIDECK** use methods recommended in this brochure to minimise dust production, and in addition:

LOCATION: Do not cut **INEX>MAXIDECK** indoors. Cut in a well ventilated outdoor location.

CLOTHING, MASK & GOGGLES: Always wear protective clothing and properly fitted and approved mask (respirator) and eye protective goggles.

DUST LIMITATION: Always use a mechanical circular saw equipped with a fitted dust extraction system. When cutting is finished always vacuum up residual dust. Maintain the work area as a dust free environment.



INEX>MAXIDECK delivers that 'decking boards' look, but without the need to fix individual boards and at 20% of the fix time.

OTHER PRODUCTS IN THE INEX RANGE



INEX>FLOOR™

INEX>FLOOR is a high strength lightweight internal or external flooring sheet with tongue and grooved (T&G) edges for a neat secure fit. Use **INEX>FLOOR's** rough side as a substrate for most finishes such as membrane + tiles, vinyl, carpet or timber; or use its smooth side and apply a clear/stained seal to retain its attractive natural raw state as a polished concrete like surface. **INEX>FLOOR** Floor Systems available and capable of delivering a Fire Resistance Level (FRL) of 90/90/90 together with exceptional acoustic performance.



INEX>DECKING™

INEX>DECKING is a high strength, yet lightweight, cement based decking board suitable for both residential and commercial applications. Its textured surface provides a superb surface for multiple coating system applications, including water based wood stains to deliver a remarkable timber like appearance. **INEX>DECKING** delivers an authentic 'timber appearance' but with a material that won't warp or rot over time like timber. Approved for all bushfire prone zones including BAL-FZ.



INEX>RENDERBOARD™

INEX>RENDERBOARD is a revolutionary, low carbon, high strength, yet lightweight cement based interior and exterior wall cladding suitable for both residential and commercial applications. **INEX>RENDERBOARD** has a tongue and groove joint down each long side for a flush tight fit and to minimise any later joint cracking. Suitable for multiple render system applications it is approved for all bushfire prone zones including BAL-FZ and also delivers a Fire Resistance Level (FRL) of 60/60/60.



INEX>WEATHERBOARD™

INEX>WEATHERBOARD is a multi-purpose weatherboard profile for a high impact, high quality finish for paint applications. At 204mm high for 174mm weatherboard coverage, its 16mm thickness provides a deep shadow below each board.

INEX>WEATHERBOARD is approved for all bushfire prone zones including BAL-FZ and also delivers a Fire Resistance Level (FRL) of 60/60/60.



INEX>WALLBOARD™

INEX>WALLBOARD is a high strength general purpose board for both internal and external applications that provides a superior smooth surface finish with multiple edge profiles including recessed edges for joint setting and painting. Delivers an exceptional painted surface, or clear seal it to retain it's beautiful raw concrete appearance. Available in 6mm to 12mm thicknesses. Delivers exceptional acoustic insulation performance with systems available for fire rated intertenancy walls as little as 116mm thick.

Proudly Distributed by



(Aust)
itiaustralia.com.au

Brands to build with[®]

Sydney (02) 8805 5000
Newcastle (02) 4953 7666
John Cook & Sons (02) 9833 0355
Brisbane (07) 3436 8400

Townsville (07) 4724 5509
Melbourne (03) 9392 8400
Adelaide (08) 8447 0400
Perth (08) 9411 9700

This brochure was printed on June 18th, 2018 and was current to information at that time.

UBIQ Pty Ltd is continually updating its brochure and install material.

We advise all enquirers to source the most current brochures and/or technical material available online at www.ubiq.com.au.