

PRODUCT INFORMATION SHEET

MAY 2018

INEX>RENDERBOARD is a revolutionary, low carbon, high strength, yet lightweight cement based interior and exterior wall cladding suitable for both residential and commercial applications. At only 16mm thick and being able to be fixed to battens or top hats at a minimum thickness of 25mm **INEX>RENDERBOARD** offers exceptional space saving façade options, even when high performance FRL or acoustic insulation is required.

INEX>RENDERBOARD has a tongue and groove joint down each long side for a flush tight fit and to minimise any later joint cracking.

A MULTI-PURPOSE BOARD

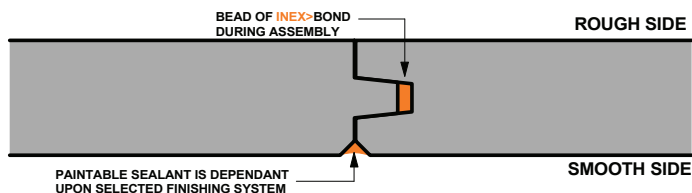
INEX>RENDERBOARD is a multi-purpose product enabling a wide choice of applications or expressions.

The smooth side of **INEX>RENDERBOARD** provides a minimum class 2 concrete surface and comes with an aris to create a 'V' joint along the long edges. This side can be coated with a number of approved paint systems of varying textures, or clear finished to retain the characteristic raw concrete look of **INEX>RENDERBOARD**. After installation the 'V' joint does not necessarily require sealing and is dependent on the selected finishing system.

The rough side of **INEX>RENDERBOARD** provides a textured finish for multiple approved render coat or trowelled on systems.



PRODUCT	LENGTH (mm)	WIDTH (mm)	THICKNESS (mm)	Kg/m ²	Kg/Sheet
INEX>RENDERBOARD	3000	600	16	20.5	38
INEX>RENDERBOARD	2700	600	16	20.5	34



WEIGHT

At Approx. 38kg or 34kg **INEX>RENDERBOARD** is lightweight and easy to handle on site.

HIGH PERFORMANCE

INEX>RENDERBOARD can be cut and worked just like comparable fibre cement sheets, but offers improved bending strength characteristics and finish quality. **INEX>RENDERBOARD** systems can be fixed to timber or steel studs with spacing at maximum 600mm centres.

NON-COMBUSTIBILITY & FRL

INEX>RENDERBOARD is non-combustible. It is approved for bushfire BAL-FZ construction and is certified to Fire Resistance Level of FRL 60/60/60.

ACOUSTIC

INEX>RENDERBOARD's on a timber frame with R2.5 insulation and 10mm plasterboard internal lining will deliver a sound insulation value of Rw/Rw+Ctr of 47/38. Insulation value will be higher (56/45) with a steel frame which will satisfy all Categories of Transport Noise Corridors for external wall requirements.

MATERIAL

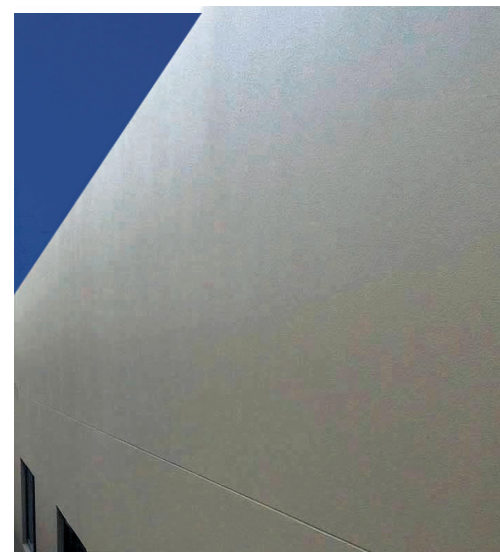
INEX>RENDERBOARD is an advanced high strength, low carbon fibre reinforced Engineered Cementitious Composite (ECC) product, containing 60% of post industrial recycled materials. It is toxin free and is 100% recyclable.

VALUE

INEX>RENDERBOARD is priced for value for the construction industry and competes strongly against all comparable products. Pricing is available on application to UBIQ or its distributors.

EASE OF USE AND HANDLING

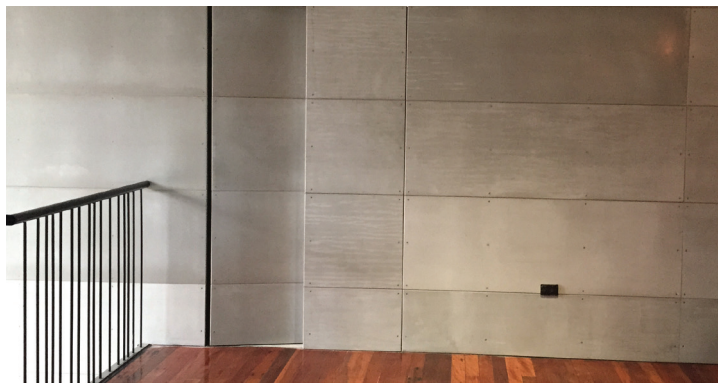
INEX>RENDERBOARD does not require any speciality tools or fixings. It can be 'off stud' joined thereby minimising waste on site.



Delivers a render finish like no other.



INEX>RENDERBOARD fitted smooth side out with 'V' joints and paint finish.



INEX>RENDERBOARD fitted smooth side out with 'V' joints and a clear finish.



INEX>RENDERBOARD fitted rough side out with seamless render coat.

WATER RESISTANCE

INEX>RENDERBOARD is water resistant, but at all times requires an approved coating system to be applied.

DURABILITY

INEX>RENDERBOARD is long-term durable and is warranted for 20 years.

ASBESTOS AND TOXIN FREE

INEX>RENDERBOARD does not contain any toxins and is asbestos free.

MOULD & TERMITE RESISTANCE

INEX>RENDERBOARD is resistant to mould and termite attack.

Important note: INEX>RENDERBOARD with a CLEAR FINISH

Whilst **INEX>RENDERBOARD** is primarily used as a cladding product for a seamless render coat or painted finish, it can also be treated with an approved clear finish to retain its raw concrete appearance. Market response to this has become significant, however as **INEX>RENDERBOARD** is manufactured from a range of recycled raw materials it can vary in surface finish and colour. To ensure customer satisfaction should a clear finish be specified or wanted it needs to be understood that a greater level of care of; product selection, handling, fixing and application of the clear coat system is required. In this regard UBIQ has published a specific document to assist specifiers and installers to achieve the best outcome for **INEX>RENDERBOARD** with a clear finish. This document – '**INEX>RENDERBOARD** Clear Coat Finish' is available in the 'COATINGS' section of our website. Please read this document carefully and if you have any further questions please contact UBIQ.

Due to the cementitious nature of **INEX>BOARDS** some superficial pin holing may occur. The smooth side of **INEX>RENDERBOARD** is characterised as a CLASS 2 concrete finish.