

PRODUCT INFORMATION SHEET

APRIL 2017

INEX>WALLBOARD is a revolutionary, low carbon, high strength multi-purpose board for both interior and exterior applications.

INEX>WALLBOARD is currently only available in 12mm thickness

INEX>WALLBOARD comes with both both arrised and recessed edges to suit different joint and setting requirements.

The smooth side of **INEX>WALLBOARD** provides a superior surface finish for paint applications or can also be finished in its beautiful raw form by applying a clear sealer.



PRODUCT	LENGTH (mm)	WIDTH (mm)	THICKNESS (mm)	Kg/m ²	Kg/Sheet	EDGE
INEX>WALLBOARD 12	3000	600	12	15.9	28.5	ARRISED
INEX>WALLBOARD 12	3000	1200	12	15.9	57	ARRISED
INEX>WALLBOARD 12	3000	600	12	15.9	28.5	RECESSED
INEX>WALLBOARD 12	3000	1200	12	15.9	57	RECESSED

MATERIAL

INEX>WALLBOARD is an advanced high strength and fire reinforced Engineered Cementitious Composite (ECC) product, containing 60% of post-industrial recycled materials.

LOW CARBON

INEX>WALLBOARD is low carbon product containing about 40% of the embodied energy of equivalent Portland cement derived products.

HIGH PERFORMANCE

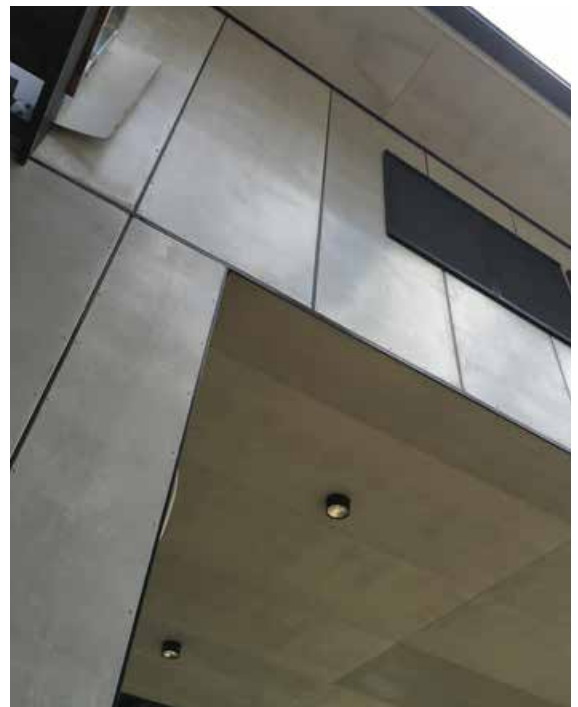
Whether; Impact, Water, Fire or Acoustic performances are required, **INEX>WALLBOARD** delivers – and all in the one single board.

DURABILITY

INEX>WALLBOARD is long term durable and is warranted for 20 years. It is suitable for both internal and qualified external applications.

VALUE

INEX>WALLBOARD is priced for value for the construction industry and strongly competes against all comparable products. Pricing is available on application to UBIQ or its distributors.



INEX>WALLBOARD can currently be used externally only as the panel for proprietary express wall systems.



TOP LEFT
External soffit:
Clear finish with
arris edges.



TOP RIGHT
Commercial Fit Out:
Clear finish with
arris edges.



LEFT (x 2)
Zushi & SAKE
Restaurant Fit Outs:

INEX>WALLBOARD
can be routed or
cut/stencilled for
signage.

APPLICATIONS

INEX>WALLBOARD is designed for paint or clear/sealed applications for internal and external surfaces. For external wall applications it must be used as a panel for 'express wall' type systems. Most proprietary express wall type façade systems can be adopted with **INEX>WALLBOARD** specified as the panel itself.

ASBESTOS & TOXIN FREE

INEX>WALLBOARD does not contain any toxins and is asbestos free.

MOULD & TERMITE ATTACK

INEX>WALLBOARD is resistant to mould and termite attack.

NON-COMBUSTIBILITY, FRL & ACOUSTICS

INEX>WALLBOARD is deemed non-combustible to AS1530.1. UBIQ's NLB-162 Discontinuous Intertency Wall System suitable for Class 2 Type A construction uses only a single layer of **INEX>WALLBOARD 12** either side, and yet achieves and FRL of -/60/60 with an acoustic rating of Rw+Ctr of 55.

NOTE: Due to the cementitious nature of **INEX>BOARDS** some superficial pin-holing may occur. The **smooth side** of **INEX>WALLBOARD** is characterised as a **Class 2** concrete finish.



INEX>WALLBOARD 12 with arris edged
butt joints and clear seal.

Refer to **INEX>WALLBOARD** Technical & Information Sheet for detailed information.