

TECHNICAL & INSTALLATION SHEET

MAY 2015

PRODUCT



WEIGHT

At approx. 12kg per length (16mm) **INEX>WEATHERBOARD** is lightweight and easy to handle on site.

STORAGE

INEX>WEATHERBOARD should be stored dry, flat and with all edges protected from damage. We recommend storage undercover and raised from the ground.

HANDLING

Wear protective gloves when handling or cutting **INEX>WEATHERBOARD**.

SUPPORT



FRAMING

INEX>WEATHERBOARD can be fixed to timber or steel studs with spacing at maximum 600mm centres.

Timber framing must be in accordance with AS 1684 – ‘Residential timber-framed construction’.

Steel framing must be in accordance with AS 3623 – ‘Domestic metal framing’.

Ensure framing is plumbed prior to fitting.

FIXING



ASSEMBLY

We recommend **INEX>WEATHERBOARD** be fitted to a staggered layout. With its tongue and groove ends it can be off-stud end jointed.

Ensure framing and **INEX>WEATHERBOARD** are clean and dry prior to fitting.

FIXINGS:

Ensure all fixings are located:

- 20mm Min. from top edge of weatherboard (no pre-drilling required)
- 12mm Min. from tongue and groove joint when centering joint to stud to avoid any damage to the tongue and groove edges.

FIXINGS – TIMBER JOISTS – Class 3 Galvanised Fixings or higher*

Screws: 10gx50mm self-embedding countersunk head screws.

FIXINGS – STEEL JOISTS – Class 3 Galvanised Fixings or higher*

Screws: 8gx40mm self-drilling, self-embedding, countersunk head screws.

*Class 4 or Stainless Steel screws for sea spray zone in accordance with AS 3566

WALL SYSTEMS



WALL SYSTEMS

INEX>WEATHERBOARD can be installed in conjunction with a variety of lightweight wall systems and finished with a range of paint finishes or coatings.

INEX>WEATHERBOARD can deliver a BAL-FZ* and/or a Fire Resistance Level (FRL) of 60/60/60 without the need for any fire rated plasterboard or fire rated sealants. Refer to the following page for further details of this fire rated system.

* BAL-FZ (Flame Zone) is the highest Bushfire Attack Level where there is an extremely high risk of ember attack and burning debris ignited by windborne embers, and a likelihood of exposure to an extreme level of radiant heat and direct exposure to flames from the fire front.



APPLICATION OF FINISHES

The **SMOOTH FINISH** of **INEX>WEATHERBOARD** is an ideal surface to be finished with multiple proprietary paint systems available on the market. Refer to Figure 1. For surface preparation we recommend an acrylic primer sealer undercoat. Refer to the COATINGS menu on the UBIQ website.

For designers wishing to achieve a timber-grain weatherboard look, the **ROUGH SAWN FINISH** of **INEX>WEATHERBOARD** provides a superb linear textured surface to attain this option. Refer to Figure 2. Details of timber-grain coating systems are available on UBIQ website. Refer to the COATINGS menu on UBIQ's website.



Figure 1



Figure 2

FRAMING SYSTEMS

INEX>WEATHERBOARD must be fixed to either timber or light gauge steel framing at a maximum of 600mm centres.

INEX>WEATHERBOARD is ideally suited for light-weight construction. It can be used as a fast-track cladding system during construction, thus resulting in both cost and time saving benefits.

For home alterations or additions, **INEX>WEATHERBOARD** can be erected easily and fitted efficiently to achieve a stunning weatherboard cottage appearance.

FRL 60/60/60 BAL-FZ WALL SYSTEMS

INEX>WEATHERBOARD wall system, even when applied directly to either a timber or steel frame has achieved an FRL of 60/60/60 when tested against the Australian Standard AS1530.4-2005 and therefore is suitable for BAL-FZ* construction in accordance with AS3958-2009. There is no fire rated plasterboard or fire rated sealants for this system, details of which are available on request, or under the FIRE RATED menu at www.ubiq.com.au.



BAL-FZ SYSTEM IN TIMBER STUD FRAME
AS 3959-2009 AS 1530.4-2005



BAL-FZ SYSTEM IN STEEL STUD FRAME
AS 3959-2009 AS 1530.4-2005

LAYING PATTERN

INEX>WEATHERBOARD must be fitted in a staggered pattern to achieve the best surface and finish. Refer to Figure 3.

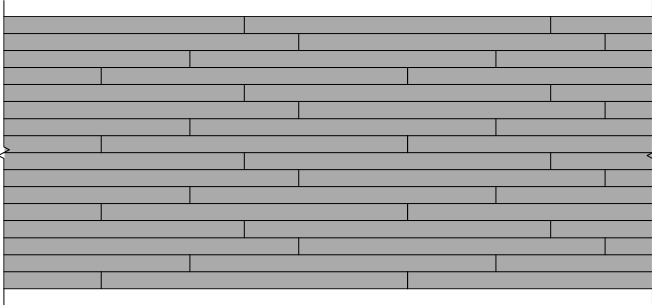


Figure 3

CORNER TRIMS

When installing **INEX>WEATHERBOARD**, corner trims must be fixed in accordance with trim manufacturer's instructions.

INTERNAL CORNER TRIM DETAIL

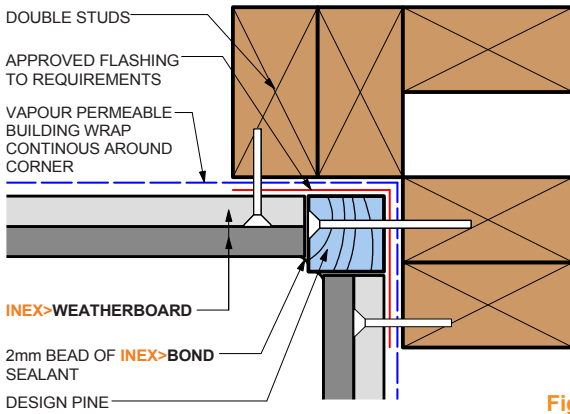


Figure 4

SIMILAR DETAIL FOR BUSH FIRE ZONES AVAILABLE ON REQUEST



EXTERNAL CORNER TRIM DETAIL

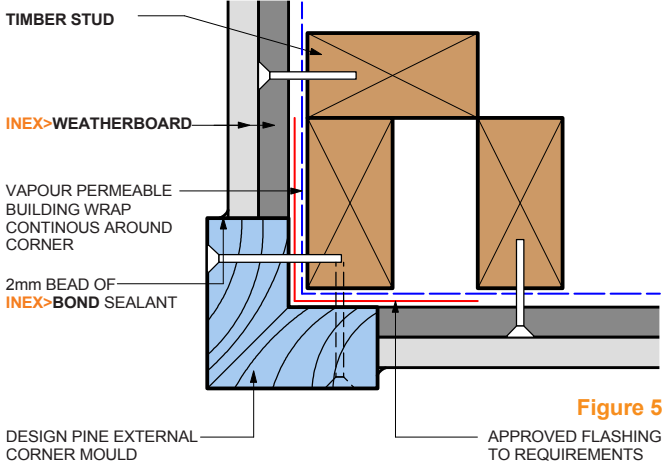


Figure 5

SIMILAR DETAIL FOR BUSH FIRE ZONES AVAILABLE ON REQUEST

TONGUE AND GROOVE JOINT

Apply a 2mm to 3mm diameter bead of **INEX>BOND** to the tongue and groove joints along the short ends of **INEX>WEATHERBOARD**. Refer to Figures 6 & 7.

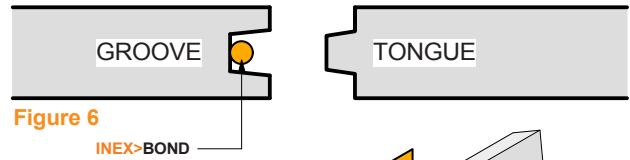


Figure 6

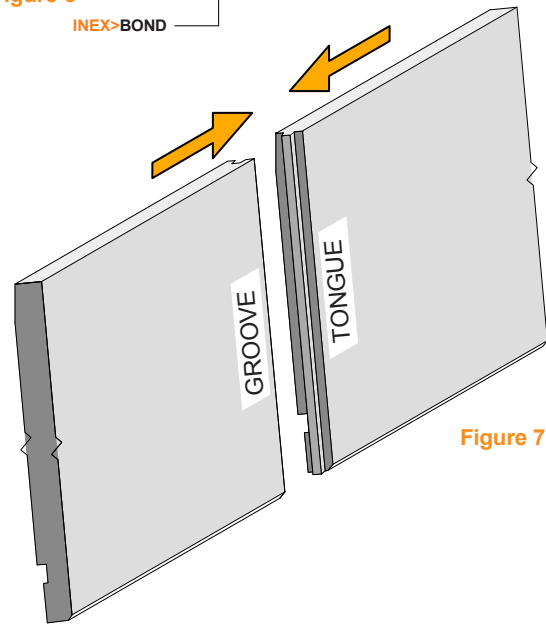


Figure 7

STARTER TRIMS

INEX>STARTERTRIM (Product Code: IST30316) must be used when installing the first row of **INEX>WEATHERBOARD**. See Detail 1 of Figure 8.

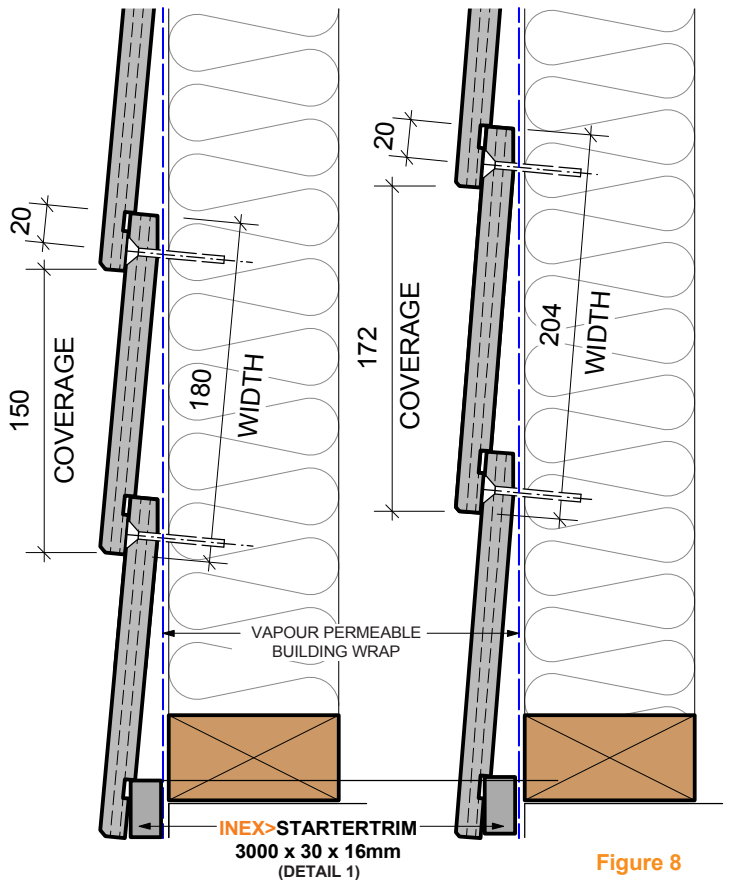


Figure 8

BOARD COVERAGE

2 types of coverage are available for **INEX>WEATHERBOARD**:
 For 180mm wide board, coverage = 150mm
 For 204mm wide board, coverage = 172mm

INSTALLATION EQUIPMENT

UBIQ recommends the following equipment and accessories for the installation of **INEX>WEATHERBOARD**:

GENERAL: **INEX>WEATHERBOARD** can be machined and worked in same way as comparable fibre cement weatherboard.

CUTTING: **INEX>WEATHERBOARD** should be cut using a mechanical dust reducing circular saw with a diamond edge blade, similar to that used to cut softer brick or stone or the ones specifically used to cut fibre cement weatherboard. See also Health & Safety section below.

SCREW FIXING: **INEX>WEATHERBOARD** must be screw fixed only. Use a cordless power drill.

DUST LIMITATION: Always limit dust with a vacuum dust extraction system with a suitable filter.

Important Notes:

Ensure all components are compatible with each other and suitable for **INEX>WEATHERBOARD** and/or the intended surface finish. Failure to install, finish or maintain this product in accordance with relevant building codes, regulations, standards and UBIQ's current published instructions may lead to personal injury, affect system performance, violate local building codes, and possibly void the product warranty.

MATERIAL PROPERTIES

INEX>WEATHERBOARD is an advanced high strength, low carbon fibre reinforced Engineered Cementitious Composite (ECC) product, containing 60% of post industrial recycled materials.

INEX>WEATHERBOARD conforms to the requirements of AS/NZS 2908.2 2000 'Cellulose-cement products Part 2: Flat sheets', other than the optional 'Warm Water' test item 6.4. In this test, **INEX>WEATHERBOARD** performs to a mean MPa of >8.

INEX>WEATHERBOARD conforms to AS 4964 2004 as containing no asbestos. It is toxin free and is 100% recyclable.

INEX>WEATHERBOARD itself is deemed non-combustible when tested in accordance with AS/NZS 1530.1 and is therefore a non-combustible material suitable for **Bushfire BAL-40** under AS3959-2009.

INEX>WEATHERBOARD when tested in accordance with the Australian Standards displayed the following fire hazard indices: AS/NZS 1530.2 - Flammability: 0 and AS/NZS 1530.3 - Ignitability: 0; Spread of Flame: 0; Heat Evolved: 0 and Smoke Developed: 1.

INEX>WEATHERBOARD when tested in accordance with AS/NZS 3837-1998 for heat and smoke release rates is classified Group 1 for Specification A2.4 of the BCA.

INEX>WEATHERBOARD wall system conforms to the requirements of **AS 3959-2009** when tested against all bush fire zones and bush fire attack levels. **INEX>WEATHERBOARD** wall system has achieved a fire resistance level (FRL) of **60/60/60** in accordance with AS 1530.4-2005 and therefore is suitable for **BAL-FZ construction***.

INEX>WEATHERBOARD is not susceptible to Termite Attack.



*Details of BAL-FZ and FRL 60/60/60 wall systems are available on request, or under the FIRE RATED menu at www.ubiq.com.au.

HEALTH & SAFETY

UBIQ advises that **INEX>WEATHERBOARD** contains fiberglass reinforcing and causes fine dust when cutting or machining. Continuous or excessive inhalation of fine dust containing fiberglass particles can cause irritation and may cause lung scarring (silicosis). This dust could be carcinogenic as all dust may be. Exposure to such dust may cause irritation to the skin or other body surfaces.

When cutting **INEX>WEATHERBOARD** use methods recommended in this brochure to minimise dust production, and in addition:

LOCATION: Do not cut **INEX>WEATHERBOARD** indoors. Cut in a well ventilated outdoor location.

CLOTHING, MASK & GOGGLES: Always wear protective clothing and properly fitted and approved mask (respirator) and eye protective goggles.

DUST LIMITATION: Always use a mechanical circular saw equipped with a fitted dust extraction system. When cutting is finished always vacuum up residual dust. Maintain the work area as a dust free environment.

Note: Due to the cementitious nature of **INEX>BOARDS** some superficial pin-holing may occur.

The **smooth side** of **INEX>WEATHERBOARD** is characterised as a **Class 2** concrete finish.

