



**Product Review Report**

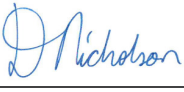
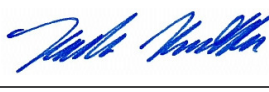
**UBIQ**  
**External Wall Systems INEX>EXPRESS**  
**Review against AS3959-2009 Amdt 3**

**Report Number: 27255600/RPT01-6d**  
**Date: 30<sup>th</sup> May 2016**

**Client:**

**UBIQ**  
**57 St Hilliers Road**  
**Auburn, NSW 2144**  
**Australia**

## AUTHORISATION

No.	Comment / Reason for Issue	Issue Date	Prepared By*	Reviewed By*
6d	Revised to include EXPRESS 60/60/60 system only, other systems now in other report	30/05/2016		
			Dominic Nicholson	Keith Nicholls

## REVISION HISTORY

No.	Comment / Reason for Issue	Issue Date	Prepared By*	Reviewed By*
0	Initial Issue	29/11/2013	Sherry Hu	Keith Nicholls
1	Revision to include 30/30/30 system incorporating timber battens	27/03/2014	Sherry Hu	Keith Nicholls
2	Revision to include 60/60/60 system	22/08/2014	Dominic Nicholson	Keith Nicholls
3	Revision to 60/60/60 system	01/09/2014	Dominic Nicholson	Keith Nicholls
4	Revised to reference most recent report	27/02/2015	Dominic Nicholson	Keith Nicholls
5	Revised to include new corner detail	1/02/2016	Dominic Nicholson	Keith Nicholls
6d	Revised to include EXPRESS 60/60/60 system only, other systems now in other report	30/05/2016	Dominic Nicholson	Keith Nicholls

\* For and on behalf of Exova Warringtonfire Aus Pty Ltd.

## CONDITIONS OF USE

© Copyright Exova Warringtonfire Aus Pty Ltd 2016

The report addresses may only reproduce this report in full for use with respect to the project specified in the report. No organisations or individuals are permitted to reproduce this report or any part thereof for any other purpose without the prior written consent of a Director of Exova Warringtonfire Aus Pty Ltd.

The copyright and intellectual property rights of Exova Warringtonfire Aus Pty Ltd extend to the data, ideas, methodologies, calculation procedures, and conclusions presented in this report and must not be used without authorisation in writing from Exova Warringtonfire Aus Pty Ltd. This report is subject to change and no liability will be accepted in relation to any loss resulting from use of the report pending approval from the authority having jurisdiction.

## CONTACT INFORMATION

### Exova Warringtonfire Aus Pty Ltd

#### Victoria

Unit 2, 409-411 Hammond Road  
Dandenong Victoria 3175  
Australia

T: +61 (0)3 9767 1000  
F: +61 (0)3 9767 1001

#### Queensland

Northpoint, Unit 29, Level 6  
231 North Quay  
Brisbane QLD 4000  
Australia

T: +61 (0)7 3238 1700  
F: +61 (0)7 3211 4833

#### New South Wales

Suite 2002a, Level 20, 44 Market Street  
Sydney NSW 2000  
Australia

T: +61 (0)2 8270 7600

W: [www.exova.com](http://www.exova.com)

E: [market.pacific@exova.com](mailto:market.pacific@exova.com)

**CONTENTS**

**1 SCOPE AND LIMITATIONS OF THE REVIEW.....4**

**2 DESCRIPTION OF SYSTEMS.....5**

2.1 PRODUCT.....5

2.2 FIELD OF APPLICATION.....8

2.3 REFERENCED TECHNICAL DATA PROVIDED BY UBIQ .....8

**3 UBIQ PRODUCT REVIEW.....8**

3.1 UBIQ INEX>EXPRESS WALL SYSTEM FOR 60 MINUTES REVIEW .....8

**4 CONCLUSION .....9**

**5 VALIDITY / DISCLAIMER.....9**

## 1 SCOPE AND LIMITATIONS OF THE REVIEW

The following scope of works was undertaken on the relevant construction provisions of *AS3959-2009 amdt 3 Construction of buildings in bushfire-prone areas*, as they relate to the installation of UBIQ INEX>EXPRESS wall system incorporating INEX>EXPRESS 16 Board when installed as wall applications.

The scope of the review included the following aspects:

- Review of available fire related test and assessment reports relevant to the use of systems in bushfire protection applications.
- Review publically available product details, i.e. marketing information.
- Compare reviewed information with the acceptable construction practices in the following documents:
  - AS3959-2009 (amdt 3) Construction of buildings in bushfire prone areas
- Based on comparative review, provide opinion on where the systems may be suitably used in accordance with the relevant prescribed construction practices.
- Provide recommendations of further testing or assessment of the systems that may be required in order to satisfy other prescribed provisions of AS3959-2009 (amdt 3).

This review is an opinion to the extent that the subject system may satisfy the relevant prescribed construction practices in AS3959-2009 (amdt 3), and is not to be construed as endorsement or certification of compliance against these provisions.

Any technical service that is with respect to the determination of compliance with AS3959-2009 (amdt 3) is to be undertaken by an independent third party body, consistent with providing an efficient and robust fire protection product certification services for products.

## 2 DESCRIPTION OF SYSTEMS

### 2.1 PRODUCT

Product Names: UBIQ INEX>EXPRESS Wall System,

Product Type: External Walls

Manufacturer: UBIQ

**Table 2.1 – Part/Material List:**

ITEM	DESCRIPTION	MATERIAL
1	Internal Wall Lining	Standard Grade Plasterboard
2	Steel Wall Framing	Cold formed steel
3	Timber Wall Framing	Timber
4	Steel Battens	16mm deep Rondo #308 16mm deep Studco #M308 24mm deep Studco M304 (0.75BMT) 28mm deep Studco #M29 29mm deep Rondo #129
5	Furring Channel Fixing Clips	Studco #M237 Clip or Rondo #237 Clip (appropriate to the Steel Batten).
6	INEX>EXPRESS 16 for 60 minute applications	600mm wide and 16mm thick with tongue and groove along long edges.
7	Optional Cavity Insulation	Option of any of the following: <ul style="list-style-type: none"> <li>• None</li> <li>• Glasswool, Rockwool or Polyester</li> </ul>
8	Sarking, Building Paper or Wall Paper	Installed over the outer face of the frame prior to fixing any external cladding

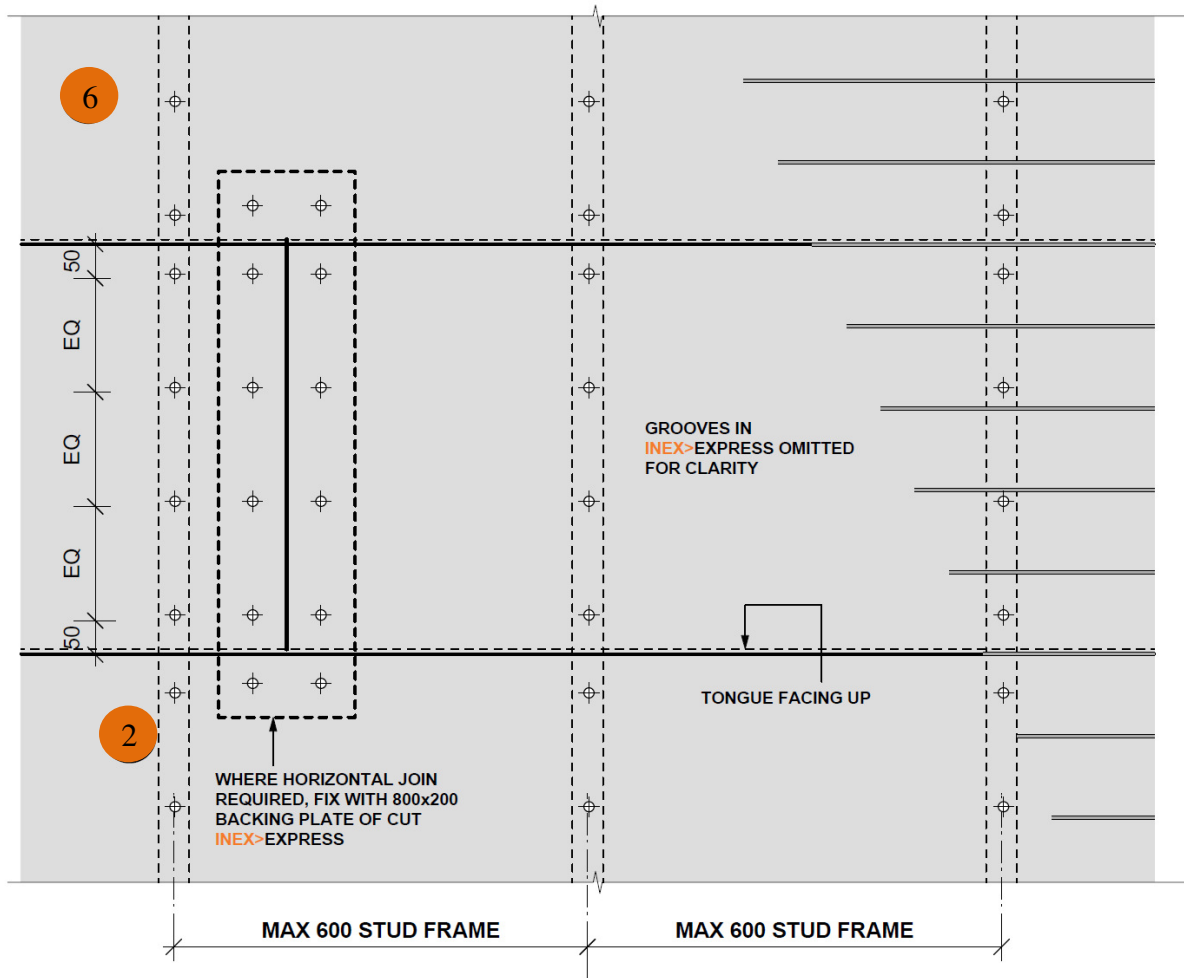


Figure 1 – Horizontal UBIQ INEX>EXPRESS Wall System Steel or timber frame – Sheet fixing details

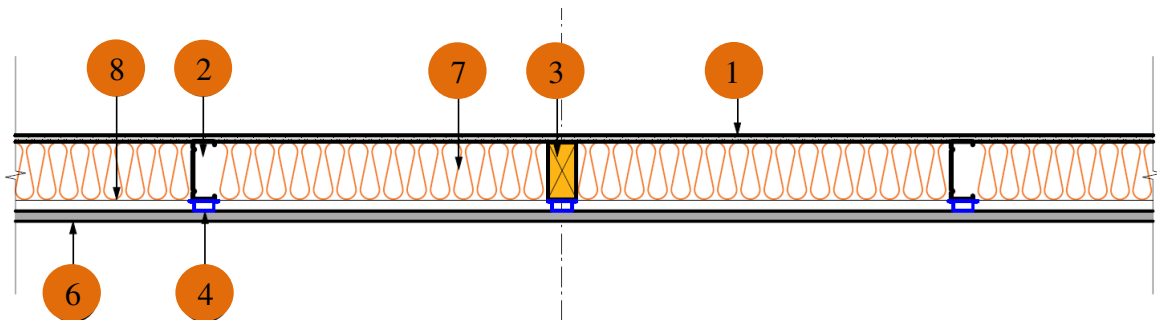


Figure 2 – Horizontal UBIQ INEX>EXPRESS Wall System Steel or timber Frame – Plan Section

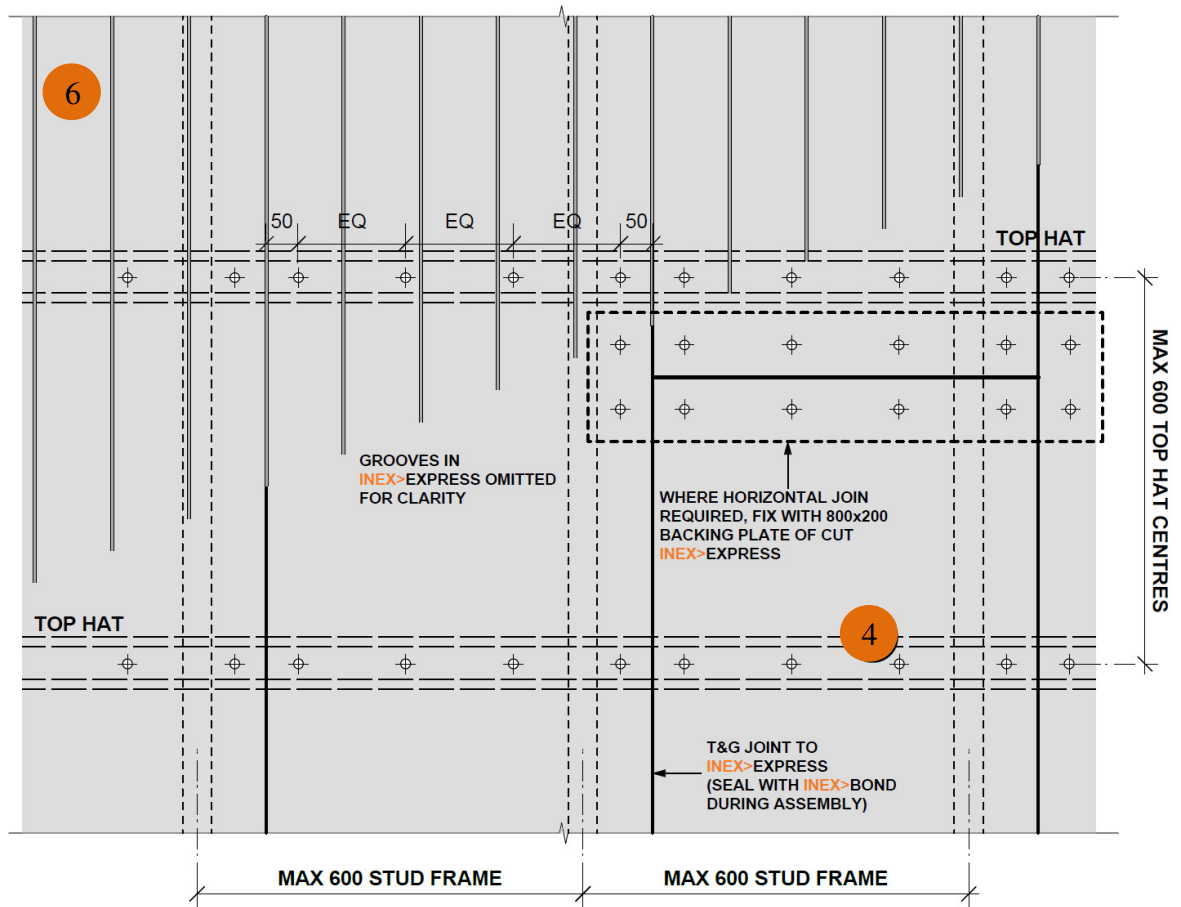


Figure 3 – Vertical UBIQ INEX>EXPRESS Wall System Steel or Timber frame – Sheet fixing details

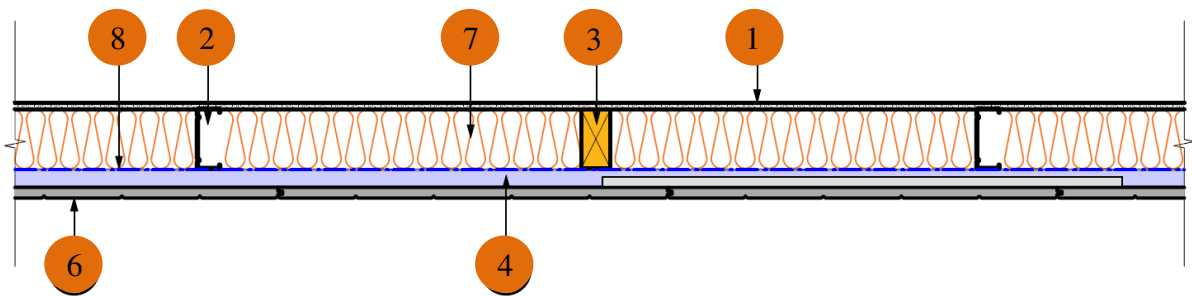


Figure 4 – Vertical UBIQ INEX>EXPRESS Wall System Steel or Timber Frame – Plan Section

## 2.2 FIELD OF APPLICATION

The nominated systems and provided information have been compared against the prescribed requirements of AS3959-2009 (amdt 3) in order to ascertain the extent the systems may be used with the current evidence of suitability (see BCA A2.2) and what further evidence of suitability may be generated to extend the range of prescribed uses.

## 2.3 REFERENCED TECHNICAL DATA PROVIDED BY UBIQ

The following technical information reference sheets was provided by UBIQ

Product	Technical Information Brochure
UBIQ <u>INEX&gt;EXPRESS</u> Wall System	EWFA 19502800.6b
	INEX>FLOOR INFO SHEET.pdf

The following information was not provided or made available for review:

- Any fire related test reports or assessments to Australian Standards.

## 3 UBIQ PRODUCT REVIEW

### 3.1 UBIQ INEX>EXPRESS WALL SYSTEM FOR 60 MINUTES REVIEW

The application of the subject system has been reviewed against the prescribed construction practices nominated in AS3959-2009 (amdt 3). In each bushfire attack level and area of application, an opinion is provided to the use of the system. Additional details are provided as below and the corresponding section of AS3959-2009 (amdt 3).

Application	BAL12.5	BAL19	BAL29	BAL40	BALFZ	BALFZ <10m
External walls (parts less than 400mm from ground or near horizontal surface (<18° to horizontal) and >110mm in width from wall)	✓ [Note1] §9.4.1(C) §3.4	✓ [Note1] §9.4.1(C) §3.4	✓ [Note1] §9.4.1(C) §3.4	✓ [Note1] §9.4.1(C) §3.4	✓ [Note1] §9.4.1(C)	* [Note 2] §9.1
External walls (other)	✓ [Note1] §9.4.1(C) §3.4	✓ [Note1] §9.4.1(C) §3.4	✓ [Note1] §9.4.1(C) §3.4	✓ [Note1] §9.4.1(C) §3.4	✓ [Note1] §9.4.1(C)	* [Note 2] §9.1
Joints in external walls	✓ [Note1] §9.4.1(C) §3.4	✓ [Note1] §9.4.1(C) §3.4	✓ [Note1] §9.4.1(C) §3.4	✓ [Note1] §9.4.1(C) §3.4	✓ [Note1] §9.4.1(C) §3.4	* [Note 2] §9.1
Gables (other)	✓ [Note1] §9.4.1(C) §3.4	✓ [Note1] §9.4.1(C) §3.4	✓ [Note1] §9.4.1(C) §3.4	✓ [Note1] §9.4.1(C) §3.4	✓ [Note1] §9.4.1(C) §3.4	* [Note 2] §9.1
Materials to enclose subfloor spaces of verandas, decks, steps, ramps and landings	✓ [Note1] §9.4.1(C) §3.4 §5.7.2.1	✓ [Note1] §9.4.1(C) §3.4 §6.7.2.1	✓ [Note1] §9.4.1(C) §3.4 §7.7.2.1	✓ [Note1] §9.4.1(C) §3.4 §8.7.2.1	✓ [Note1] §9.4.1(C) §3.4 §9.7.2.1	* [Note 2] §9.1

Notes:

- The system has been assessed based on testing in EWFA 19502800.6d and achieved an FRL of 60/60/60 in accordance with AS1530.4-2005.
- This application is where the setback to classified vegetation is less than 10m (refer clause 9.1 of AS3959-2009 amdt 3).



#### 4 **CONCLUSION**

The reviewed UBIQ external wall cladding systems may be used in most circumstances with consideration and exceptions to the issues discussed in this report for each of the systems, in Section 3. Compliance to relevant building regulations in the use of the product within a development is subject to acceptance by the Authorities Having Jurisdiction.

Alternate arrangements of the system in conjunction with other elements may be appropriate, subject to further investigation.

#### 5 **VALIDITY / DISCLAIMER**

This report is prepared for *UBIQ* as described in this report only and applies to the nominated materials and form of construction in review AS3959-2009 (amdt 3).

Any modifications, changes or amendments to the AS3959-2009 and referenced standards may invalidate the findings of this report. These items should be referred to Exova Warringtonfire Aus Pty Ltd to allow consideration to be made of the extent that these changes may have to the outcome of this review, detailed in this report.

Attention is drawn to the conditions of use depicted on page 2 of this report.