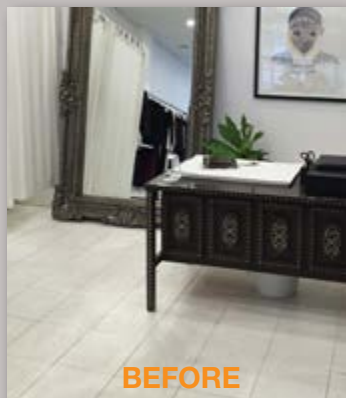


Case Study

INEX>FLOOR™ For a Fashionable Finish



BEFORE



AFTER

PROJECT: **Splice Boutique, 7C Lawrence Street, Freshwater, NSW**

WHAT: **Fashion Boutique**

WHEN: **July 2015**

PRODUCT: **INEX>FLOOR finished like a polished concrete surface**

BUILDER: **Constellation Carpentry
Leo Felton 0414 080 045**

Splice Boutique needed an affordable yet stylish alternative to revive their Freshwater store.

They discovered that **INEX>FLOOR** was just what they were looking for. Laid smooth side up as a direct stick to pre-existing tiles, **INEX>FLOOR** (2700 x 600) delivered an expensive polished concrete appearance at an affordable price.

A light sand once laid, followed by UBIQ's recommended 3 coat water based epoxy sealing and polyurethane coating system resulted in the sophisticated look at Splice Boutique.

Splice Boutique invited UBIQ to the launch of their new store as a thank you for providing a product that suited their needs in every way.

Boutique Owner