

WHICH EXTERNAL WALL SYSTEM

When choosing which external wall system to adopt there are 4 main factors to consider:

- How much valuable space does the wall take up?
- How much will it cost and how long will it take to build?
- What about its performance, acoustic or thermal insulation?
- Finally, how good will it look and feel and how long will it last?

To assist you in your decision process this document (below and overleaf) compares the **INEX>RENDERBOARD** external wall system to both a comparable Autoclaved Aerated Concrete (AAC) system and a typical brick veneer wall.

Through the twin drivers of affordability and planning controls Australian homes are getting smaller. Lot sizes are reducing and internal space v building footprint now matters.

INEX>RENDERBOARD delivers an external wall system only 137mm thick, or at least 60mm thinner than a typical AAC wall system.

At over 120mm thinner than a typical brick veneer wall this produces up to 10 square meters more internal area to a family home.

This 10 square meters could be an additional bedroom.

SPACE

Bricks are; expensive, weather dependant, time consuming and impose a greater load on footings.

The cost of materials delivered to site of **INEX>RENDERBOARD** and AAC wall systems are near comparable.

At 32kg per sheet **INEX>RENDERBOARD** is less than half the weight of AAC panels. With its T&G edges it can be off stud joined for minimised waste.

Time and labour is cost. **INEX>RENDERBOARD** can be assembled in a fraction of the time and labour than other external wall systems.

COST

INEX>RENDERBOARD's unique formulations mean that at only 16mm thick it can deliver an improved acoustic performance to comparable 75mm AAC wall systems.

Using only 18kg/m³ R2.5 Knauf Earthwool E4332 Batts and with a steel frame construction **INEX>RENDERBOARD** walls deliver a sound reduction index of Rw+Ctr 54.

With this same insulation **INEX>RENDERBOARD** external walls achieve a thermal performance of R-value 3.39 and BAL-FZ or FRL 60/60/60 fire ratings.

PERFORMANCE

INEX>RENDERBOARD is effectively a 16mm thick lightweight pre-cast concrete panel. With its T&G + Recessed joints and textured surface it is specifically designed for render, texture or paint coat systems that feel like a solid wall and resist cracking at the joints or deterioration over time.

With minimal chips and cracks occurring during construction **INEX>RENDERBOARD** delivers a stunning final finished rendered, textured or paint coat.

Multiple coating systems have been approved and UBIQ warrants **INEX>RENDERBOARD** for a period of 20 years.

QUALITY

THE FOUR PILLARS OF CHOICE

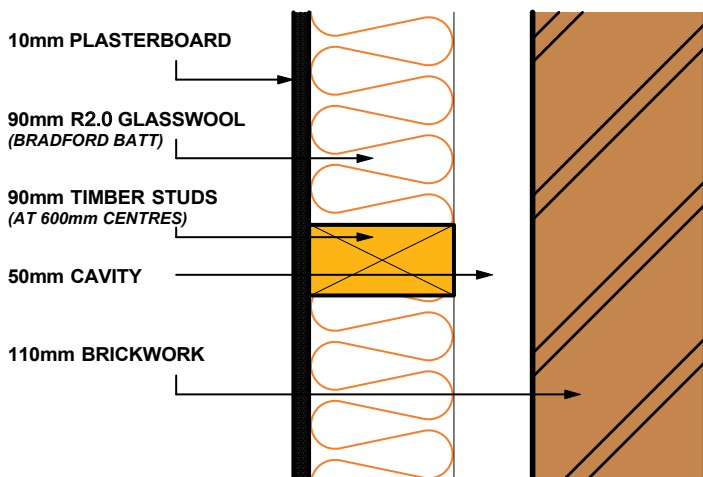
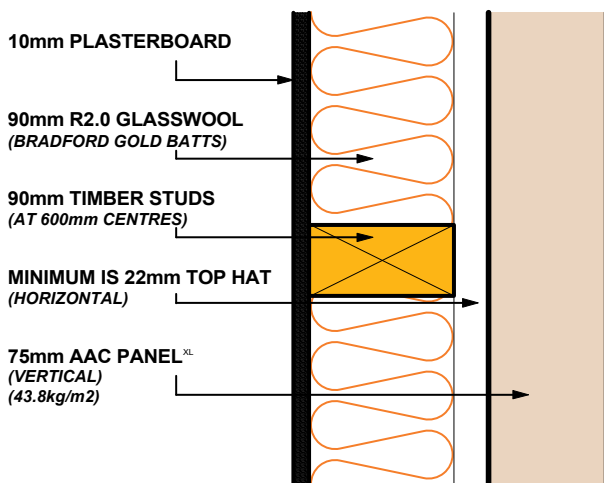
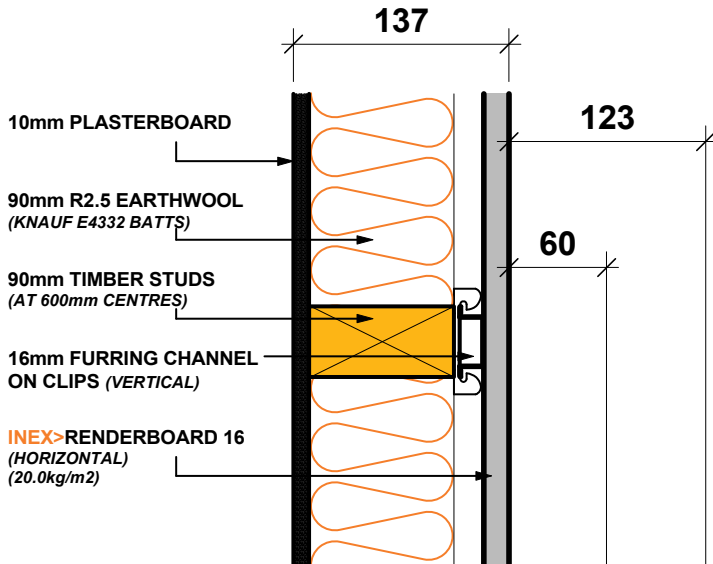


The finished quality is paramount.

INEX>RENDERBOARD delivers a flawless rendered surface. With its tongue and groove joints it is designed to resist cracking due to differential substrate movement over time.

WHICH TIMBER FRAME SYSTEM

MAY 2017
Page 2



INEX>RENDERBOARD™

(BAL-FZ & FRL 60/60/60)

Thickness (mm)	137
Acoustic (Rw/Rw+Ctr)	54/45
R-Value min. (Winter/Summer)	3.39/3.06
BAL-FZ or FRL 60/60/60	Yes

AAC PANEL SYSTEM

(CSR for Hebel PowerPanel: Test ATF 1460)

Thickness (mm)	197
Acoustic (Rw/Rw+Ctr)	45/36
R-Value min. (Winter/Summer)	3.15/2.94
BAL-FZ or FRL 60/60/60	Yes

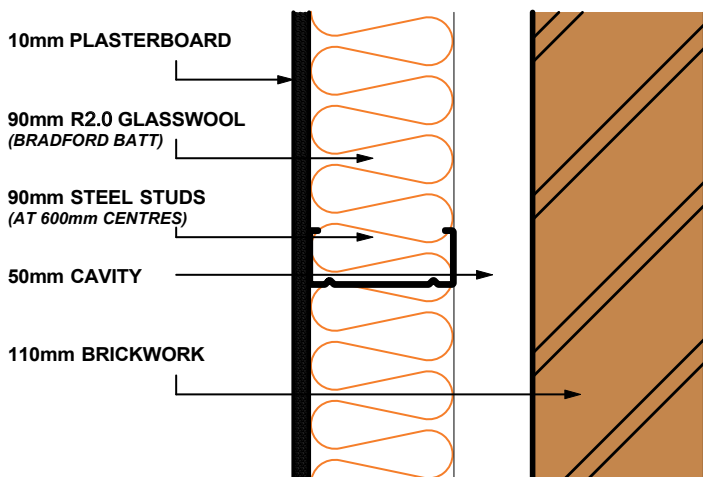
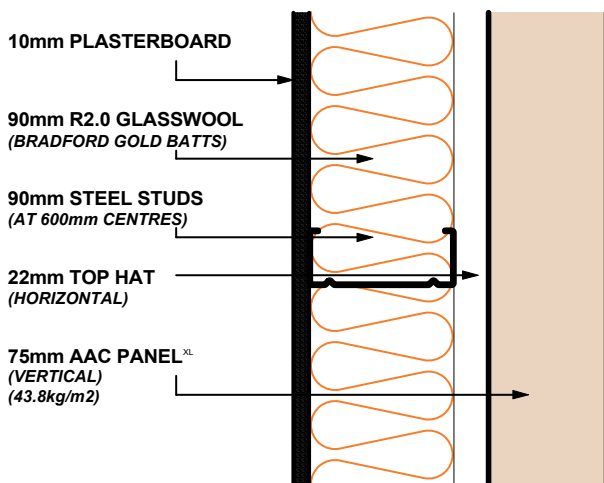
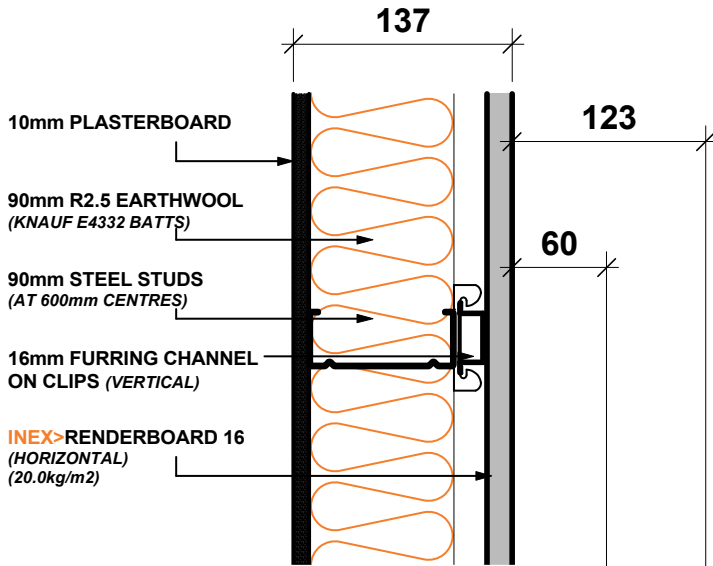
BRICK VENEER

(TYPICAL)

Thickness (mm)	260
Acoustic (Rw/Rw+Ctr)	57/49
R-Value min. (Winter/Summer)	3.27/3.06
BAL-FZ or FRL 60/60/60	Yes

WHICH STEEL FRAME SYSTEM

MAY 2017
Page 3



INEX>RENDERBOARD™

(BAL-FZ & FRL 60/60/60)

Thickness (mm)	137
Acoustic (R _w /R _w +C _{tr})	54/45
R-Value min. (Winter/Summer)	3.39/3.06
BAL-FZ or FRL 60/60/60	Yes

AAC PANEL SYSTEM

(CSR for Hebel PowerPanel: Test ATF 1460)

Thickness (mm)	197
Acoustic (R _w /R _w +C _{tr})	45/36
R-Value min. (Winter/Summer)	3.15/2.94
BAL-FZ or FRL 60/60/60	Yes

BRICK VENEER

(TYPICAL)

Thickness (mm)	260
Acoustic (R _w /R _w +C _{tr})	57/49
R-Value min. (Winter/Summer)	3.27/3.06
BAL-FZ or FRL 60/60/60	Yes



UBIQ

www.ubiq.com.au

