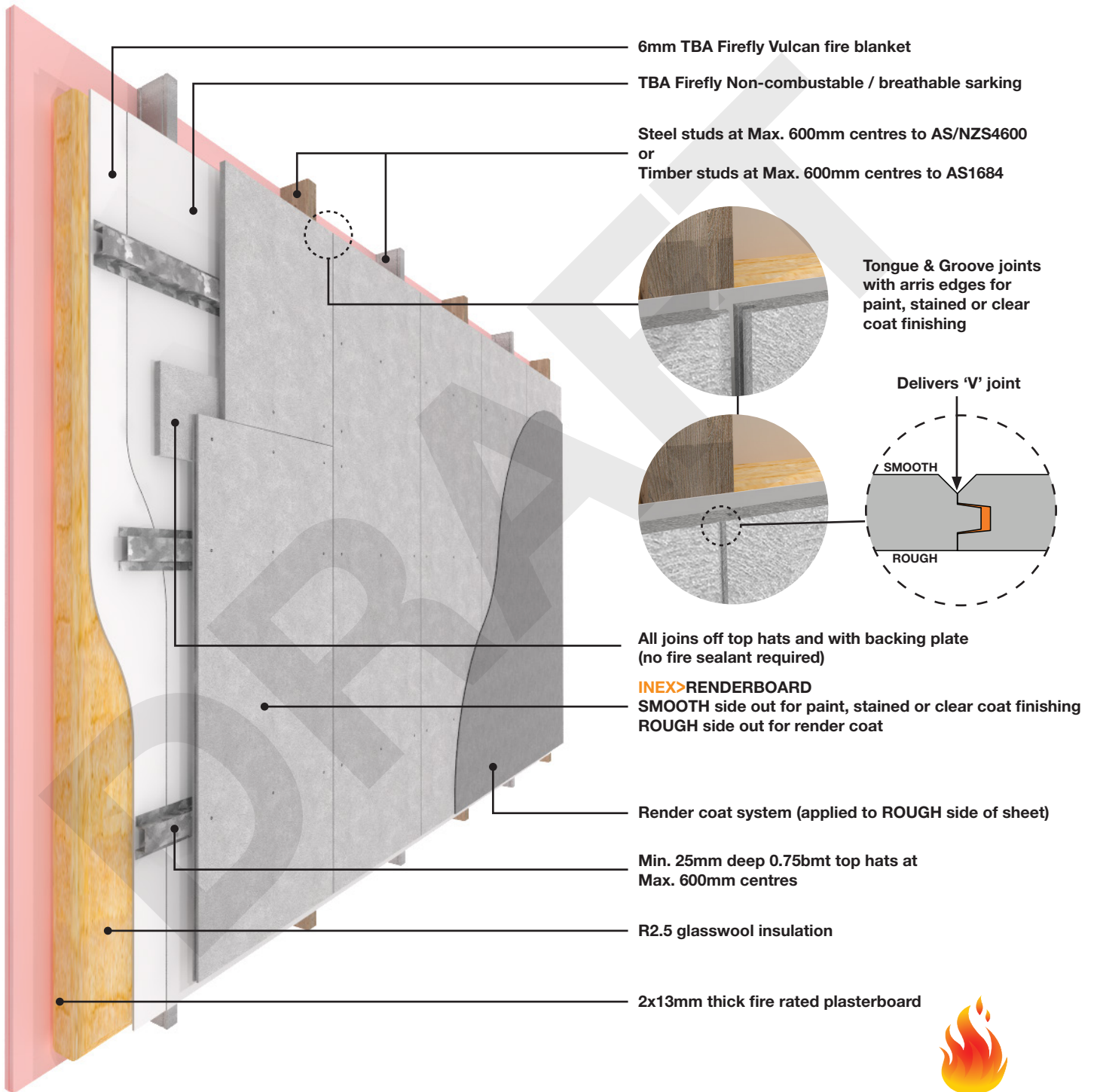


INEX> RENDERBOARD™

TIMBER OR STEEL FRAME WITH VERTICAL SHEETS : FRL -/120/120



Achieves FRL -/120/120 when tested to AS1530.4-2005

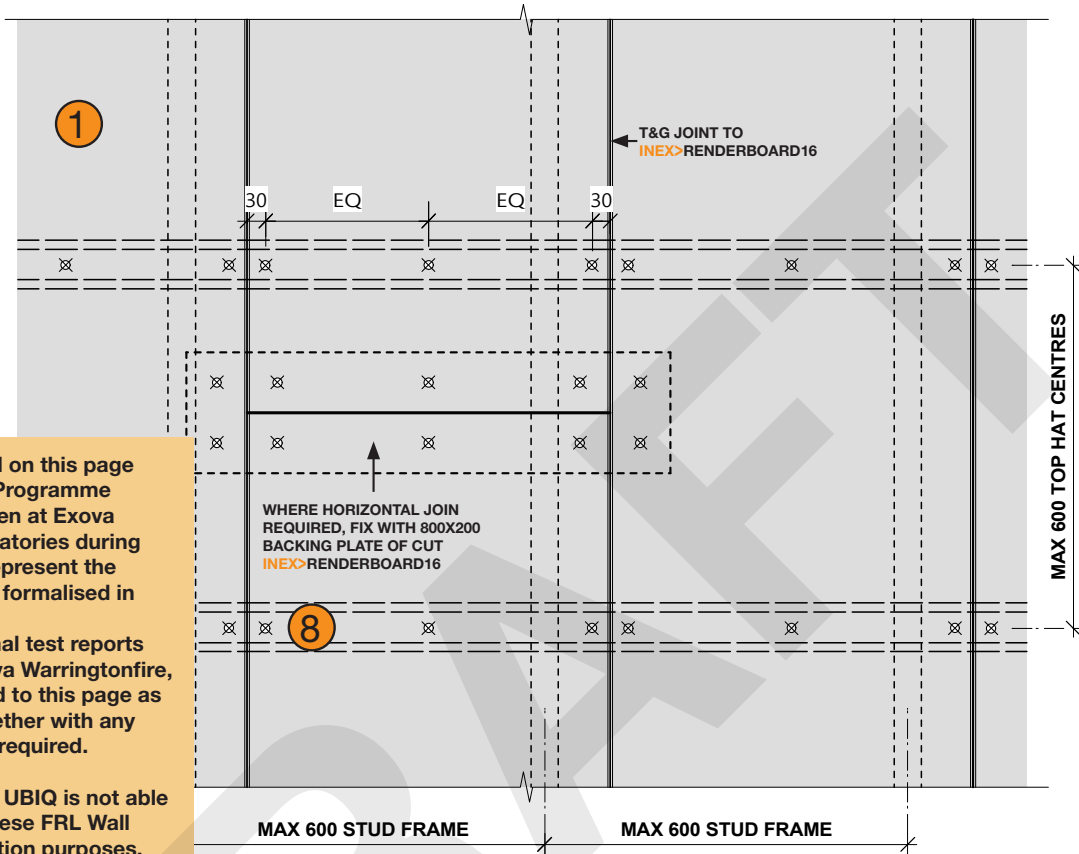


INEX>BOARDS™

ANY BUILDING • ANY SURFACE • ANYWHERE

INEX> RENDERBOARD™

TIMBER OR STEEL FRAME WITH VERTICAL SHEETS : FRL -/120/120

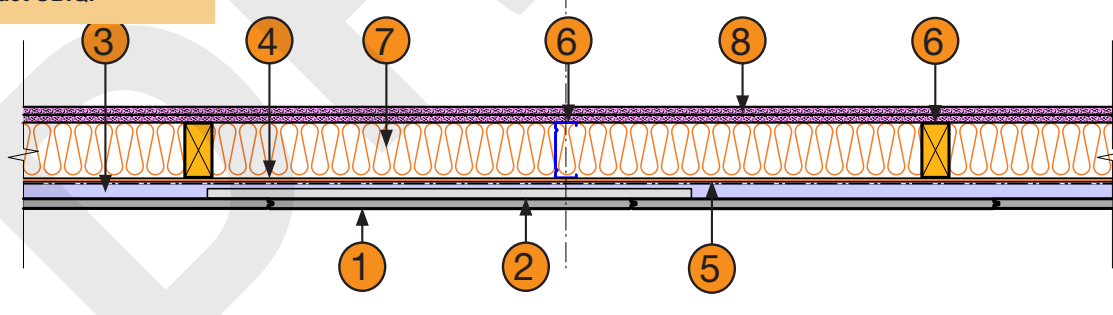


The systems provided on this page are a result of a Test Programme to AS1530.4 undertaken at Exova Warringtonfire's laboratories during May 2018, and they represent the outcomes likely to be formalised in due course.

UBIQ is awaiting formal test reports and EWFA's from Exova Warringtonfire, which will be provided to this page as soon as received together with any changes that may be required.

As such, at this stage UBIQ is not able to formally warrant these FRL Wall Systems for construction purposes.

For any further information in this regard, please contact UBIQ.



- ① INEX>RENDERBOARD16
- ② 800x200 Backing plate (Cut from INEX>RENDERBOARD16)
- ③ Min. 25mm deep 0.75bmt top hats at Max. 600mm centres
- ④ TBA Firefly Non-combustable / breathable sarking
- ⑤ 6mm TBA Firefly Vulcan fire blanket
- ⑥ Steel studs at Max. 600mm centres to AS/NZS4600 or Timber studs at Max. 600mm centres to AS1684 (Both drawn)
- ⑦ R2.5 glasswool insulation
- ⑧ 2x13mm thick fire rated plasterboard
- ⑨ 10g Min. class 3 galvanised self driller counter sinking screws
BREMICK SWRC3100352
or
BREMICK vortexfibre SURC3500302

NOTES
 This external wall system supported by Exova Warringtonfire EWFA *PENDING*
 Refer also to INEX>RENDERBOARD Technical Sheet for fixing details