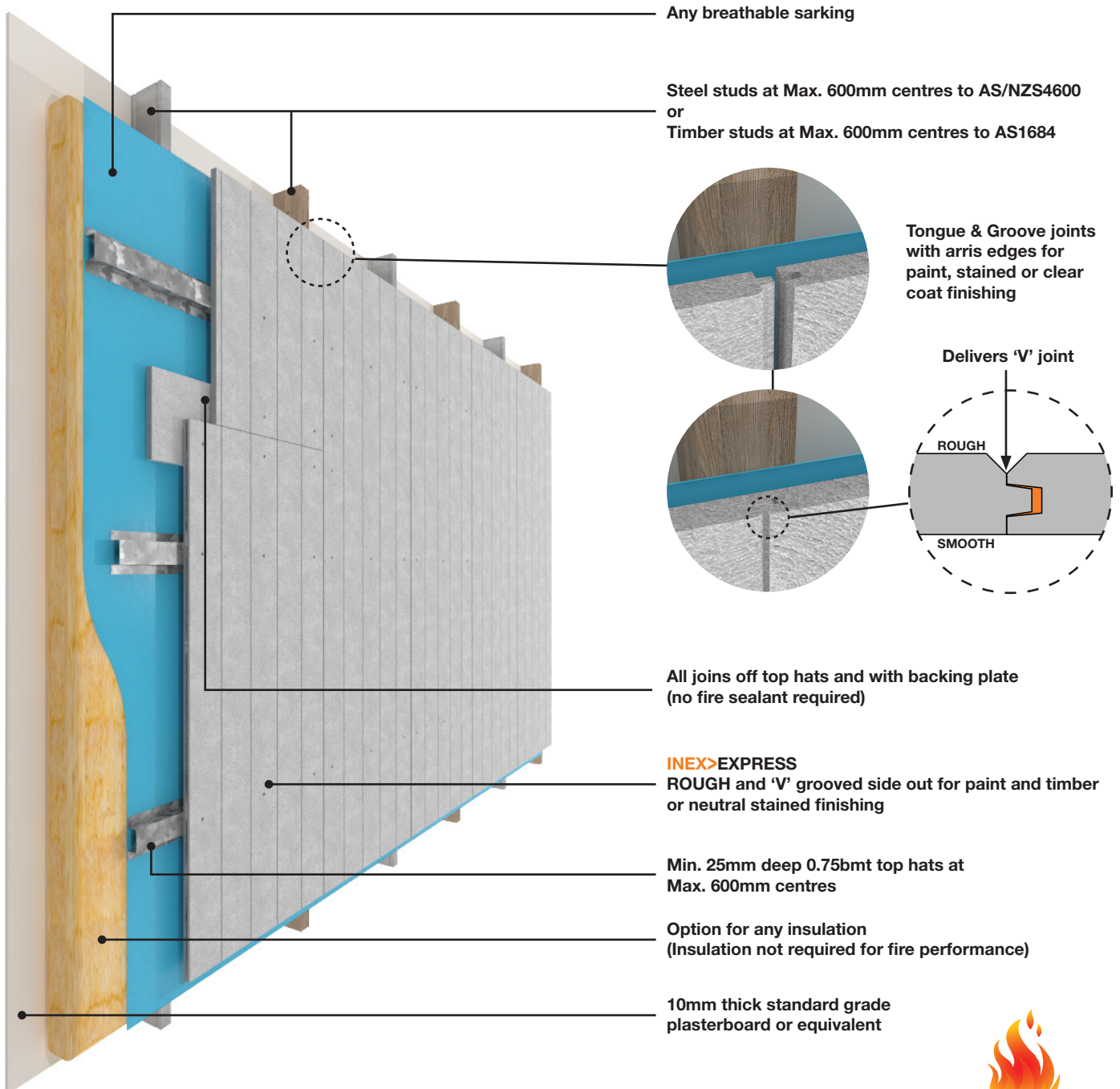


# INEX > EXPRESS™

TIMBER OR STEEL FRAME WITH VERTICAL SHEETS : FRL 60/60/60 & BAL-FZ



Achieves FRL 60/60/60 when tested to AS1530.4-2005  
Meets AS3959-2009 Section 9 (BAL-FZ) via testing to AS1530.4-2005

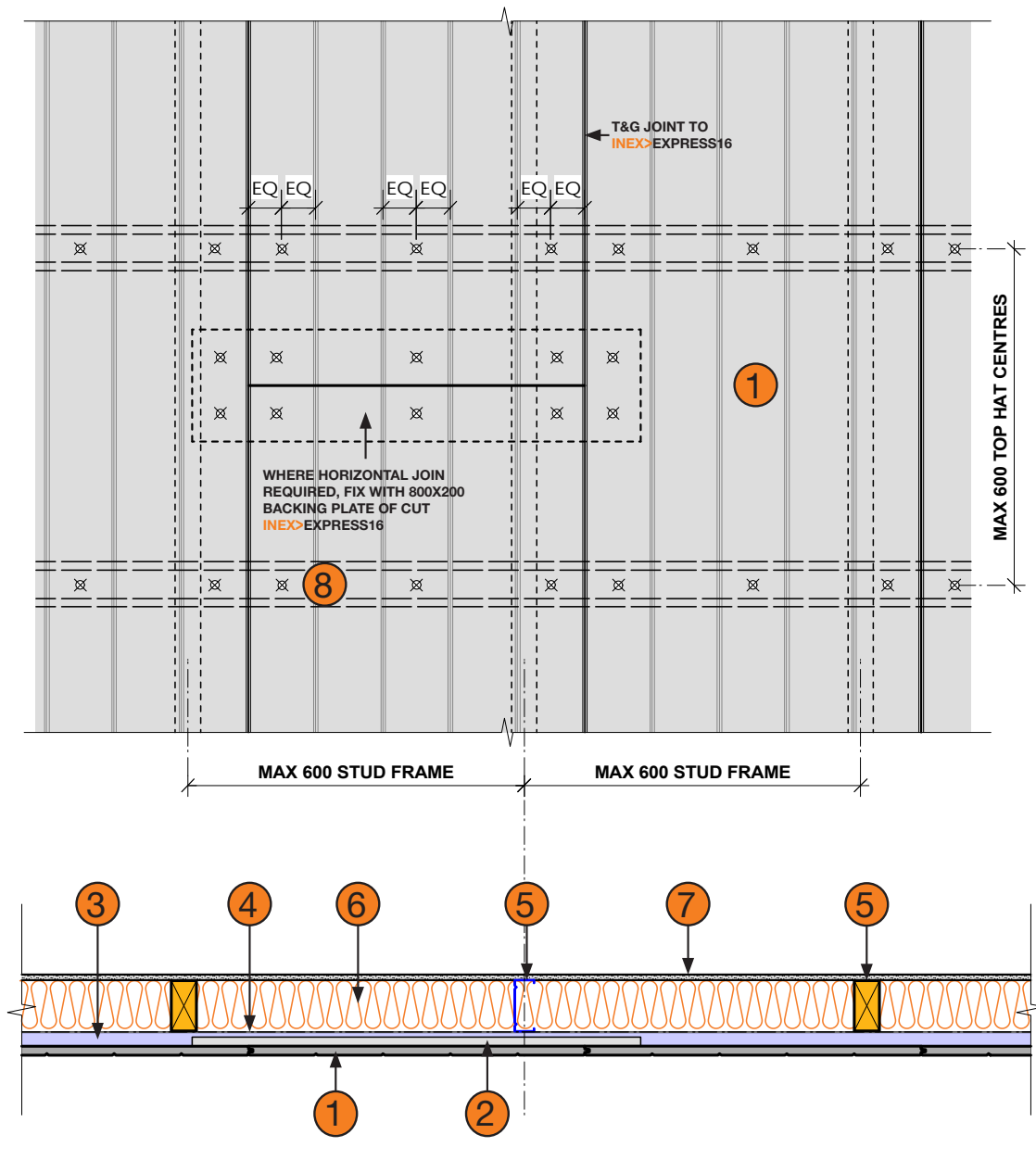


## INEX > BOARDS™

ANY BUILDING • ANY SURFACE • ANYWHERE

# INEX > EXPRESS™

## TIMBER OR STEEL FRAME WITH VERTICAL SHEETS : FRL 60/60/60 & BAL-FZ



- ① INEX > EXPRESS16
- ② 800x200 Backing plate (Cut from INEX > EXPRESS16)
- ③ Min. 25mm deep 0.75bmt top hats at Max. 600mm centres
- ④ Any breathable sarking
- ⑤ Steel studs at Max. 600mm centres to AS/NZS4600 or Timber studs at Max. 600mm centres to AS1684 (Both drawn)
- ⑥ Any insulation (Insulation not required for fire performance)
- ⑦ 10mm thick standard grade plasterboard or equivalent
- ⑧ 10g Min. class 3 galvanised self driller counter sinking screws

### NOTES

This external wall system supported by Exova Warringtonfire EWFA 19502800.6b and 27255600/RPT01-6b  
Refer also to INEX > EXPRESS Technical Sheet for fixing details

BREMICK SWRC3100352  
or  
BREMICK vortexfibre SURC3500302