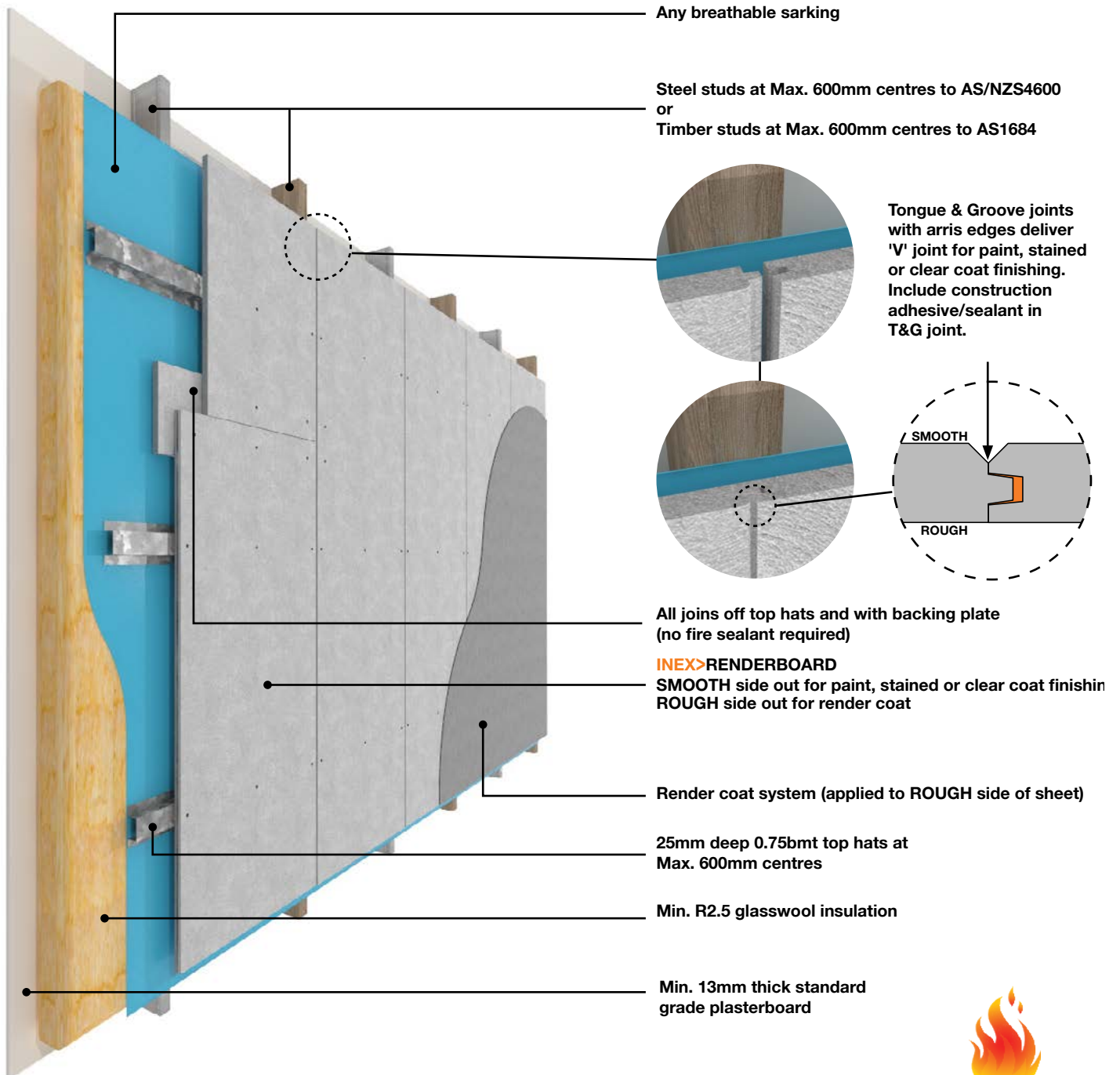


# INEX> RENDERBOARD™

TIMBER OR STEEL FRAME WITH VERTICAL SHEETS: FRL 60/60/60 & BAL-FZ  
25mm DEEP TOP HATS



Achieves FRL 60/60/60 from outside only when tested to AS 1530.4-2014  
Meets AS 3959-2018 Section 9 (BAL-FZ) via testing to AS 1530.4-2014

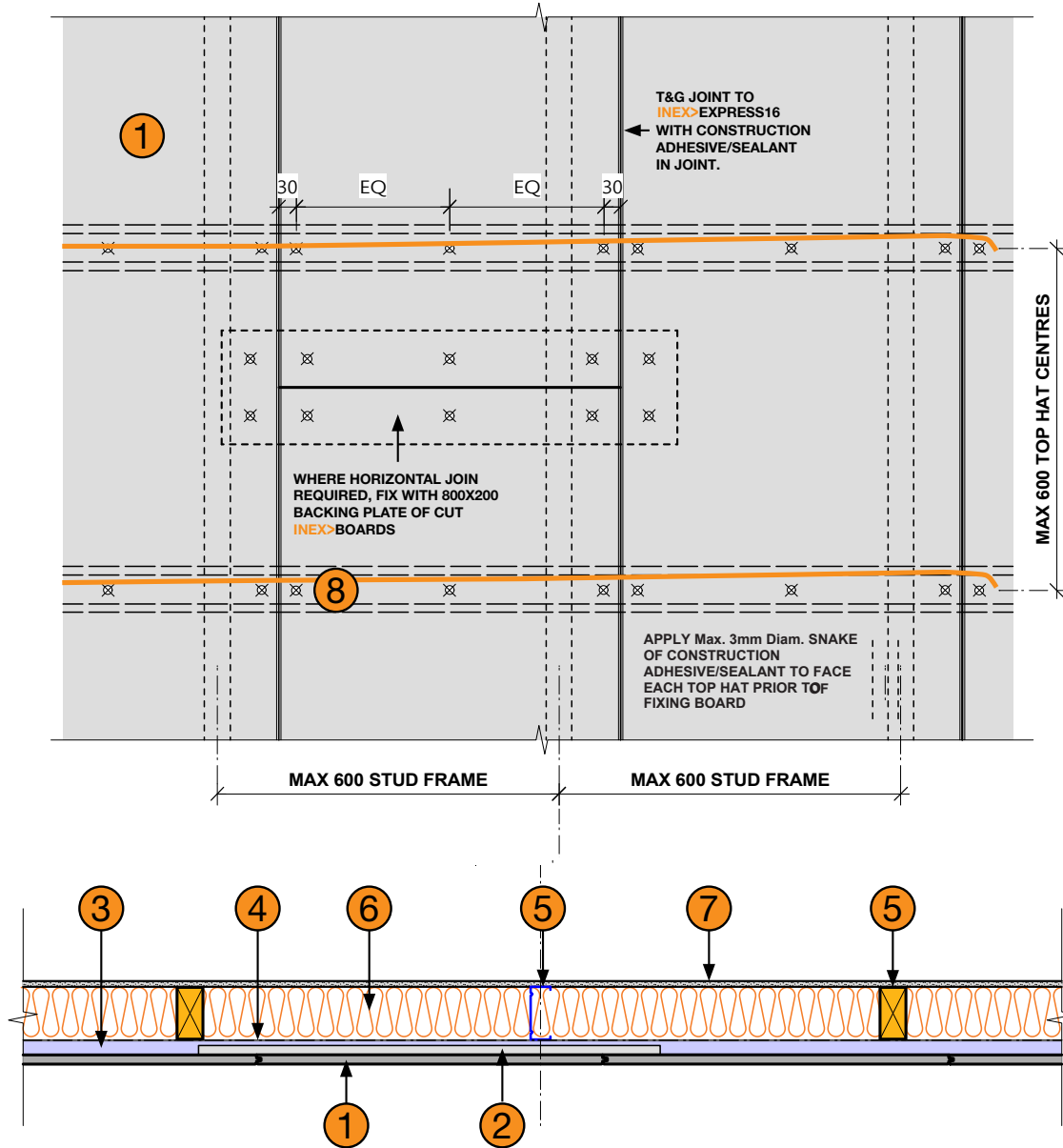


## INEX> BOARDS™

ANY BUILDING • ANY SURFACE • ANYWHERE

# INEX> RENDERBOARD™

## TIMBER OR STEEL FRAME WITH VERTICAL SHEETS: FRL 60/60/60 & BAL-FZ 25mm DEEP TOP HATS



① INEX>RENDERBOARD16

② 800x200 Backing plate  
(Cut from INEX>BOARDS)

③ 25mm deep 0.75bmt top hats at  
Max. 600mm centres

④ Any breathable sarking

⑤ Steel studs at Max. 600mm centres to AS/NZS4600  
or  
Timber studs at Max. 600mm centres to AS1684  
(Both drawn)

⑥ Min. R2.5 glasswool insulation

⑦ 13mm thick standard grade plasterboard

⑧ 10g Min. class 3 galvanised self driller counter  
sinking screws  
BREMICK SWRC3100352  
or  
BREMICK vortexfibre SURC3500302

### NOTES

Refer also to INEX>RENDERBOARD Technical Sheet  
for fixing details