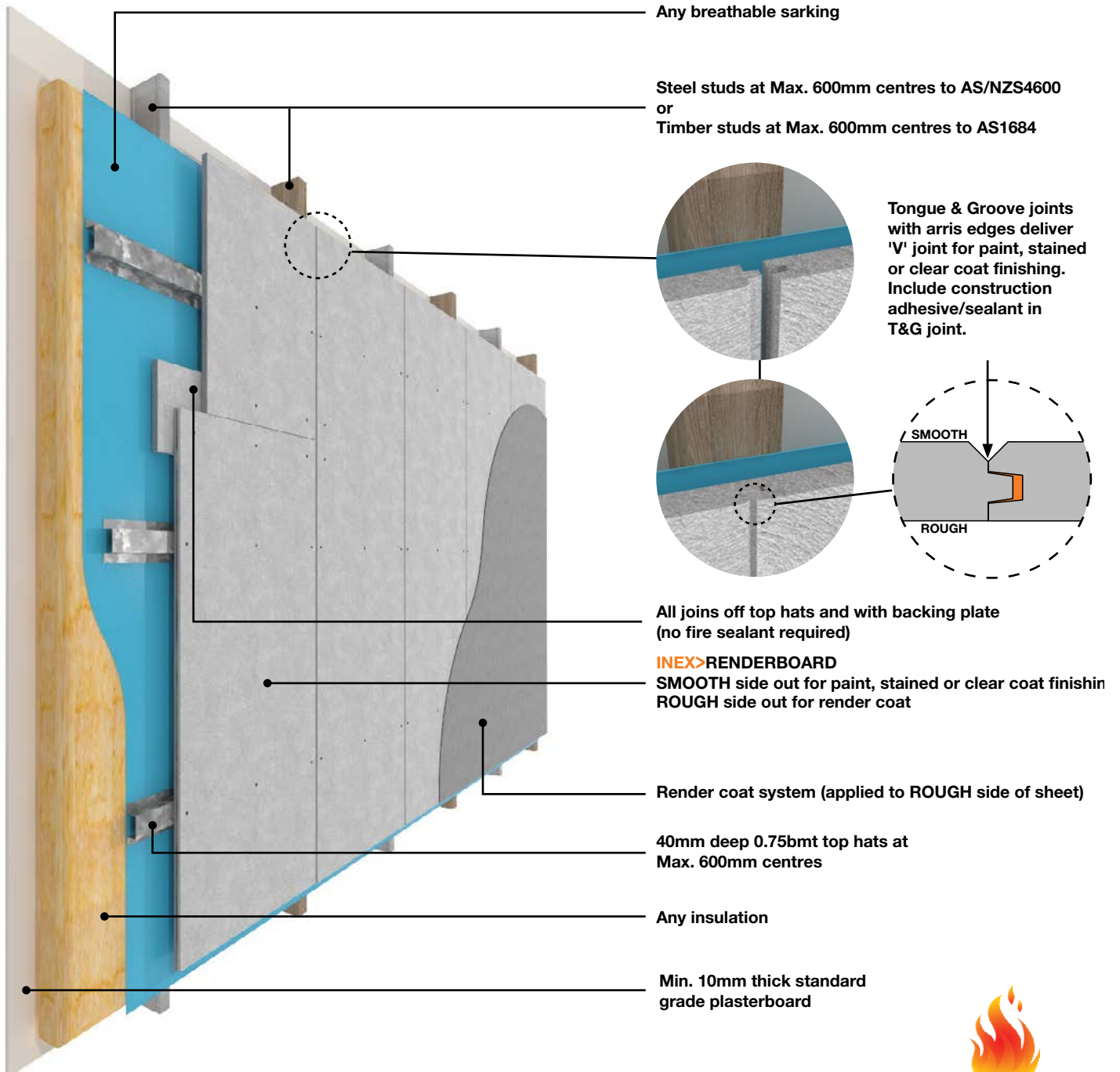


INEX> RENDERBOARD™

TIMBER OR STEEL FRAME WITH VERTICAL SHEETS: FRL 60/60/60 & BAL-FZ
40mm DEEP TOP HATS or GREATER



Achieves FRL 60/60/60 from outside only when tested to AS 1530.4-2014
Meets AS 3959-2018 Section 9 (BAL-FZ) via testing to AS 1530.4-2014

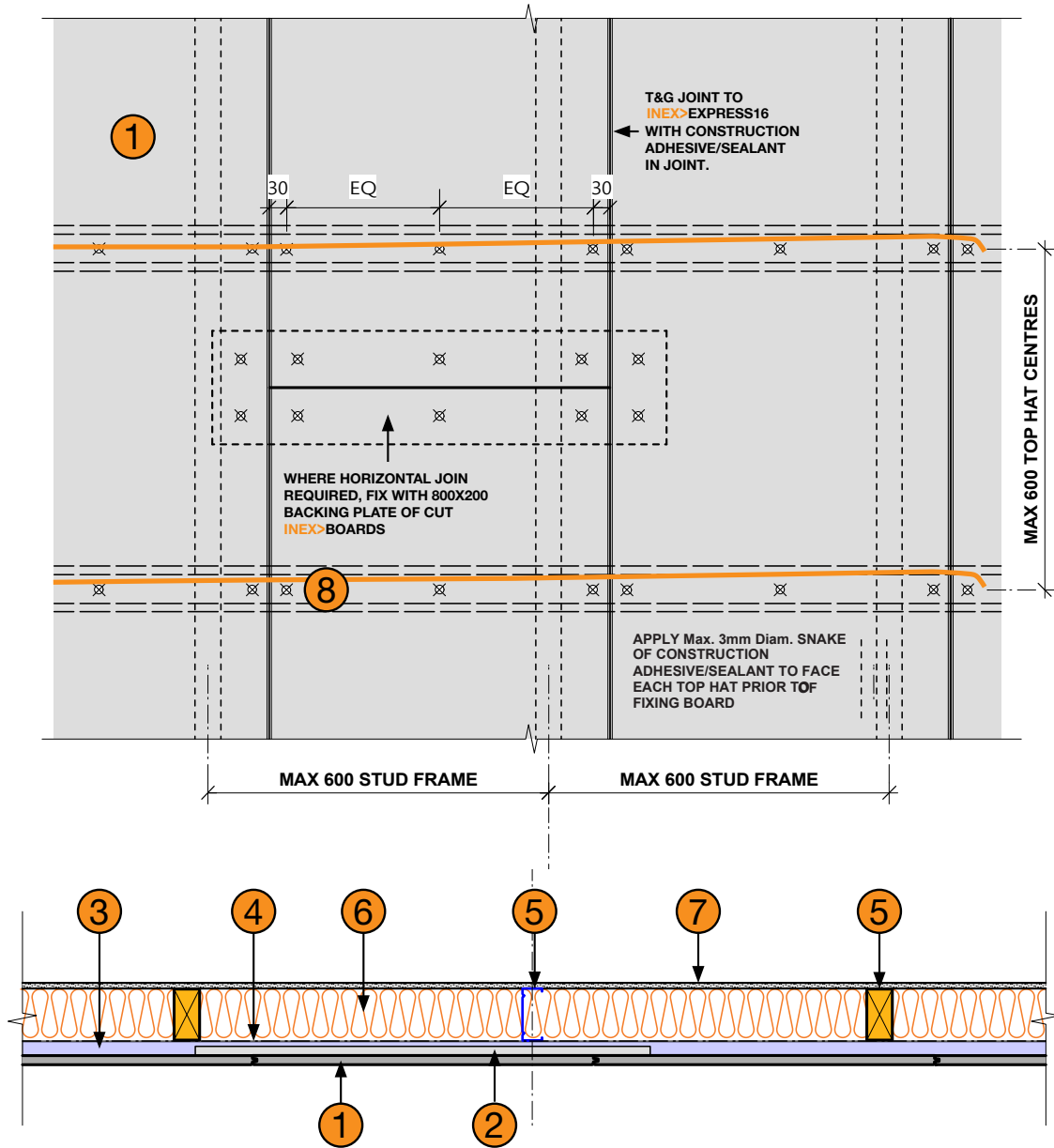


INEX>BOARDS™

ANY BUILDING • ANY SURFACE • ANYWHERE

INEX> RENDERBOARD™

TIMBER OR STEEL FRAME WITH VERTICAL SHEETS: FRL 60/60/60 & BAL-FZ
40mm DEEP TOP HATS or GREATER



- | | |
|---|---|
| <p>1 INEX>RENDERBOARD16</p> <p>2 800x200 Backing plate (Cut from INEX>BOARDS)</p> <p>3 40mm deep 0.75bmt top hats at Max. 600mm centres</p> <p>4 Any breathable sarking</p> | <p>5 Steel studs at Max. 600mm centres to AS/NZS4600 or Timber studs at Max. 600mm centres to AS1684 (Both drawn)</p> <p>6 Any insulation</p> <p>7 10mm thick standard grade plasterboard</p> <p>8 10g Min. class 3 galvanised self driller counter sinking screws BREMICK SWRC3100352 or BREMICK vortexfibre SURC3500302</p> |
|---|---|

NOTES

Refer also to INEX>RENDERBOARD Technical Sheet for fixing details