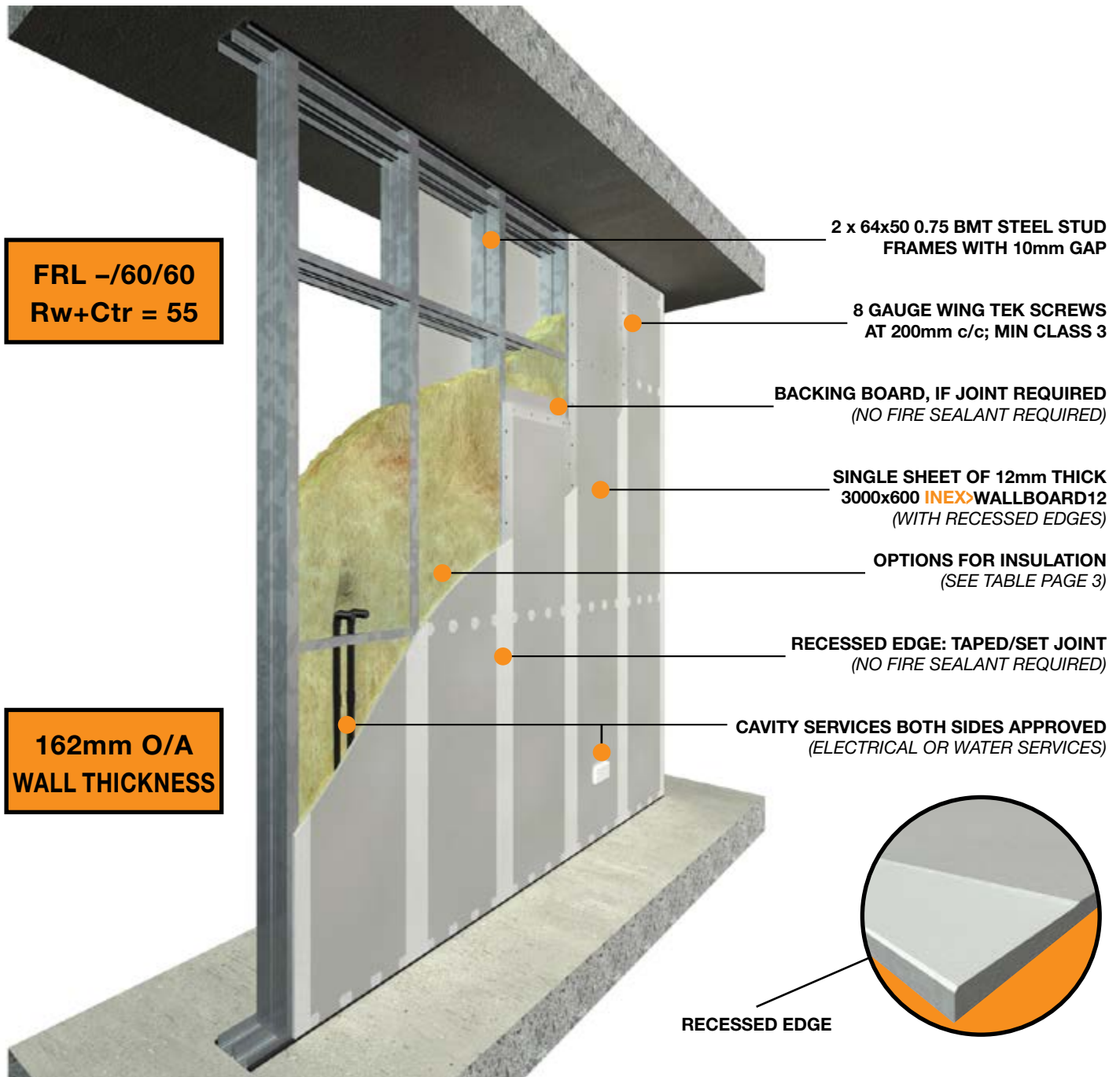


INEX>WALLBOARD12 SYSTEM NLB-162
A SUPER HIGH IMPACT CEMENTITIOUS SHEET FOR
STEEL FRAME LIGHTWEIGHT CONSTRUCTION INTERTENANCY & COMMON WALLS



NON-LOAD BEARING / DISCONTINUOUS CONSTRUCTION
CLASS 2, 3 OR 4 PART BUILDING, TYPE A CONSTRUCTION
INTERTENANCY WALLS AND COMMON WALLS – CAVITY SERVICES BOTH SIDES

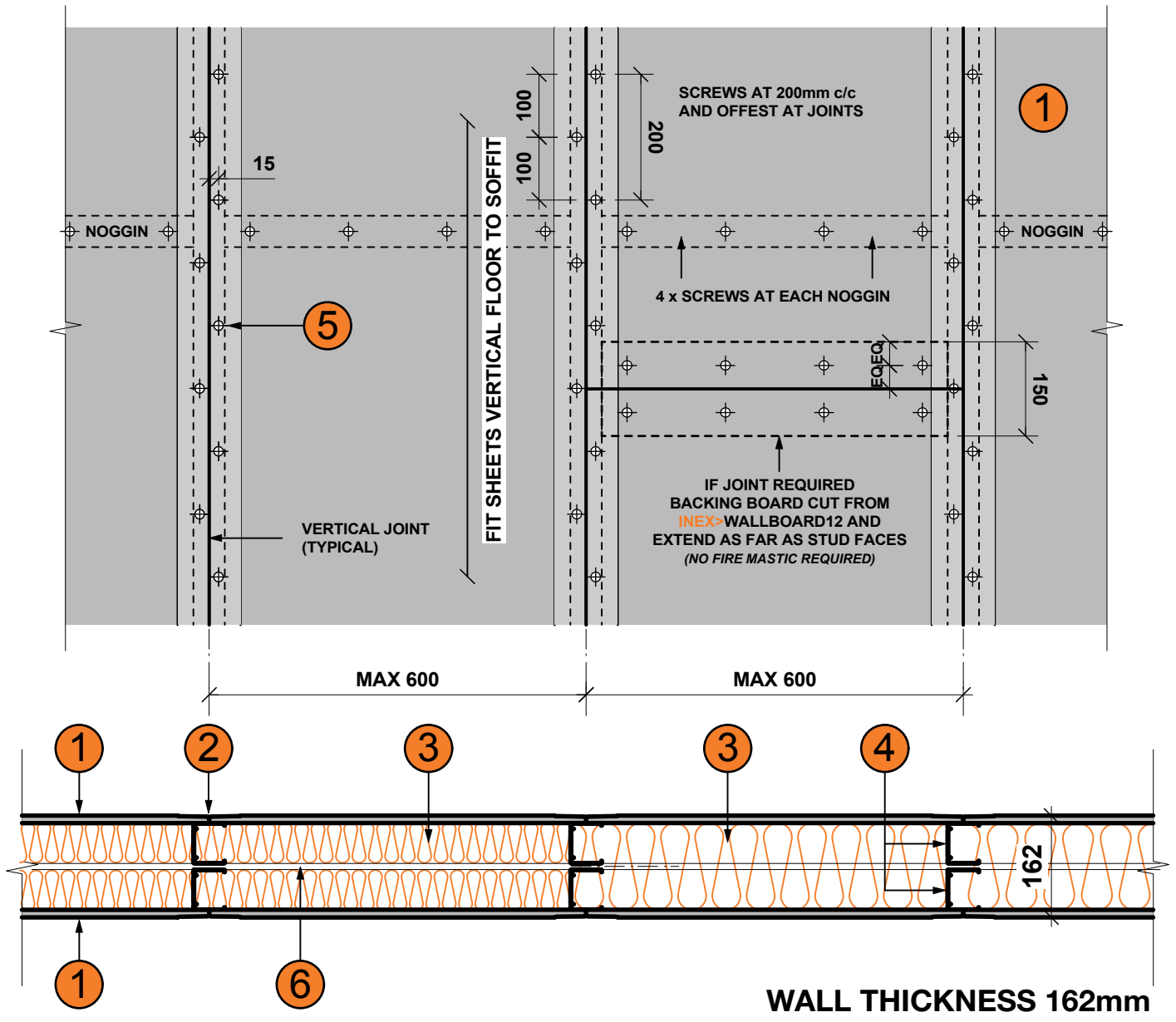
INEX>PARTYWALL™ NLB-162



ANY BUILDING • ANY SURFACE • ANYWHERE

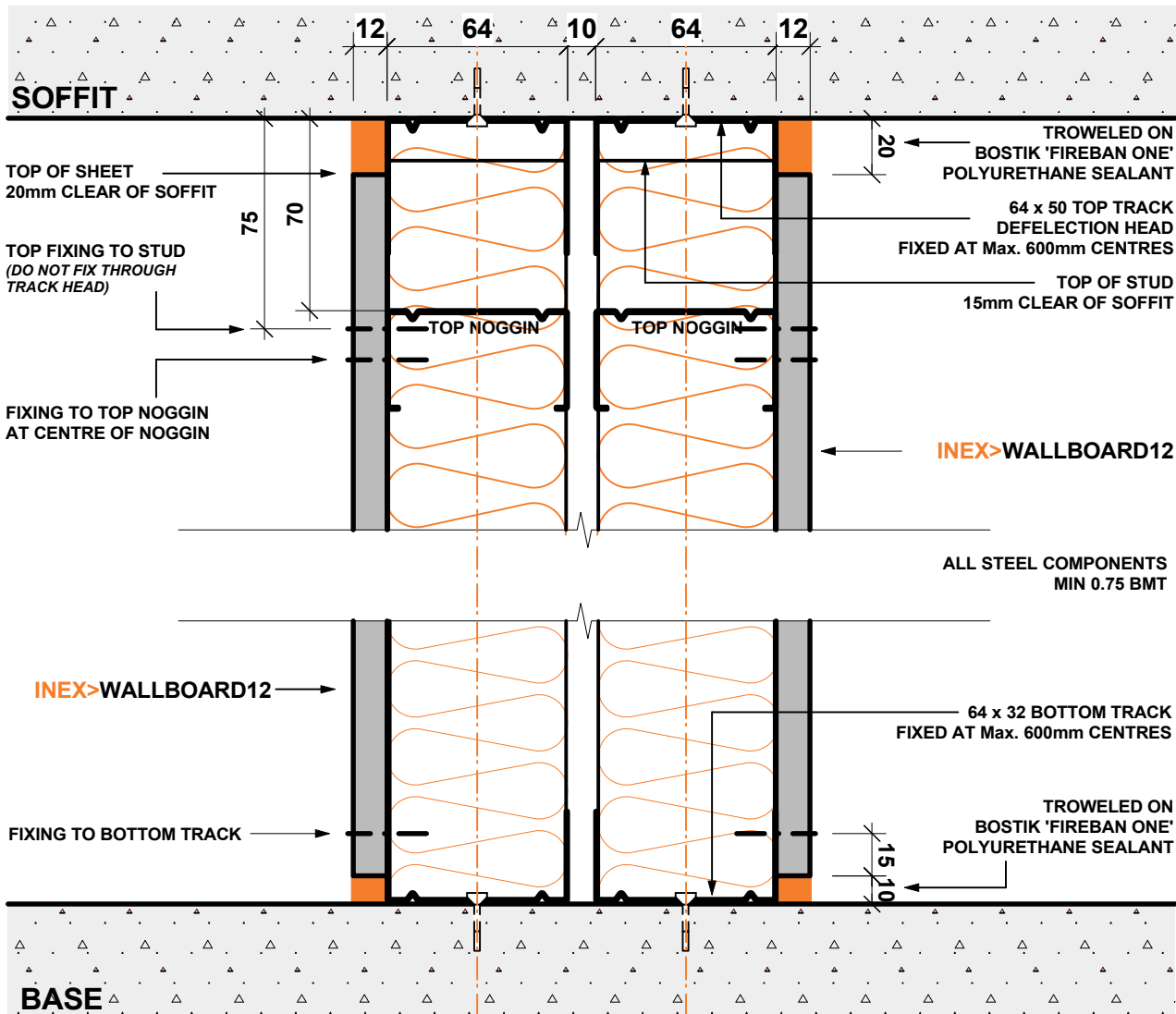
STEEL FRAME: INEX>WALLBOARD12 FRL -/60/60 & Rw+Ctr 55

APRIL 2018
Page 2



- 1 3000x600 INEX>WALLBOARD12 (WITH RECESSED EDGES)
- 2 RECESSED EDGE: TAPED/SET JOINT (NO FIRE SEALANT REQUIRED)
- 3 OPTIONS FOR INSULATION (SEE TABLE PAGE 3)
- 4 64x50 0.75 BMT STEEL STUD FRAME (BY STUDCO BUILDING SYSTEMS)
- 5 8 GAUGE WING TEK SCREWS, MIN CLASS 3
- 6 MIN 10mm GAP

**NON-LOAD BEARING / DISCONTINUOUS CONSTRUCTION
CLASS 2, 3 OR 4 PART BUILDING, TYPE A CONSTRUCTION
INTERTENANCY WALLS AND COMMON WALLS – CAVITY SERVICES BOTH SIDES**



INSULATION OPTIONS

TYPE OF INSULATION	Fire Resistance Level F/R/L	Acoustic Airborne Rw/Rw + Ctr	Acoustic Services Predicted SPL
2 x min. 75mm glasswool (min. 24kg/m ³) such as - 2 x 75mm Fletchers HD Pink Batts (24kg/m ³) - 2 x 75mm CSR Bradford Acoustigard (24kg/m ³)	-/60/60 <i>Exova-RIR33287300</i>	62/55 <i>PKA-EOS 004</i>	AAAC 5 Star Rating of <30 dBA <i>PKA-EOS 004</i>
2 x min. 90mm glasswool (min. 20kg/m ³) such as - 2 x 90mm Knauf Earthwool (20kg/m ³) - 2 x 90mm CSR Bradford Acoustigard (20kg/m ³)			
1x140mm R3.1 Knauf Earthwool (7kg/m ³)			
2 x min. 90mm polyester (min. 24kg/m ³) such as - 2 x 90mm Autex HPI polyester (24kg/m ³)			

INEX>PARTYWALL™ NLB-162



ANY BUILDING • ANY SURFACE • ANYWHERE

STEEL FRAME: INEX>WALLBOARD12 FRL -/60/60 & Rw+Ctr 55

APRIL 2018
Page 4



APARTMENT SIZE 82m²

SPACE GAIN 3.5m²

WALL SYSTEM	INTERTENANCY WALL MIN FRL -/60/60 MIN Rw+Ctr 55	EXTERNAL WALL MIN FRL -/60/60
TYPICAL AAC WALL SYSTEM THICKNESS (mm)	228	230
INEX>WALLBOARD SYSTEM THICKNESS (mm)	170	135

GAIN THE SPACE – SELL/RENT THE SPACE

FOR A TYPICAL 80m² TWO BEDROOM APARTMENT

INEX>PARTY & INEX>EXTERNAL WALLS DELIVER

AN ADDITIONAL 3.0m² INTERNAL STRATA AREA

(WHEN REPLACING TYPICAL INTERTENANCY AND COMMON WALLS AT 228mm THICK & TYPICAL EXTERNAL WALL AT 230mm THICK)