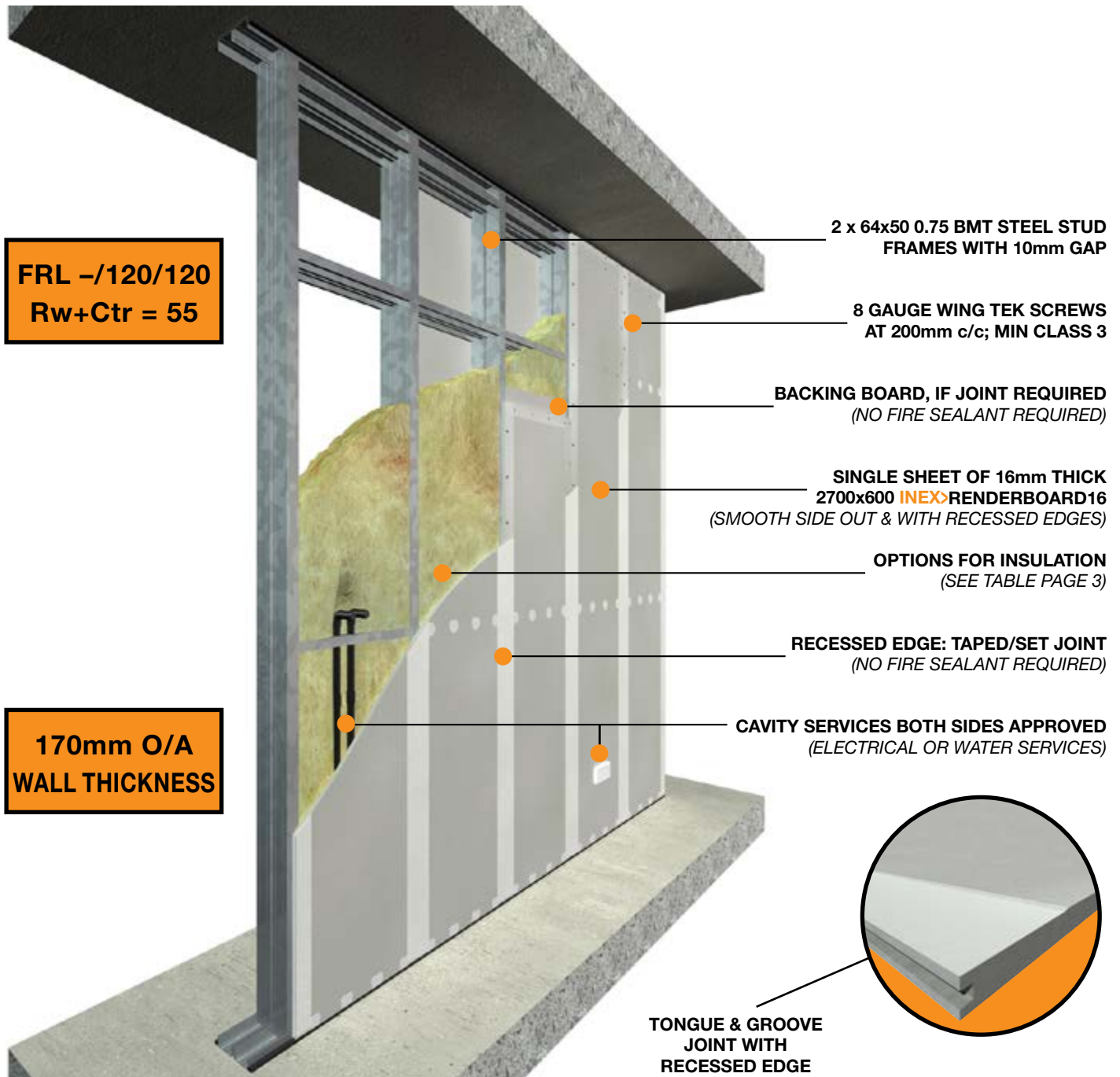


## INEX>RENDERBOARD16 SYSTEM NLB-170

### A SUPER HIGH IMPACT CEMENTITIOUS SHEET FOR

### STEEL FRAME LIGHTWEIGHT CONSTRUCTION INTERTENANCY & COMMON WALLS



**NON-LOAD BEARING / DISCONTINUOUS CONSTRUCTION  
CLASS 2, 3 OR 4 PART BUILDING, TYPE A CONSTRUCTION  
INTERTENANCY WALLS AND COMMON WALLS – CAVITY SERVICES BOTH SIDES**

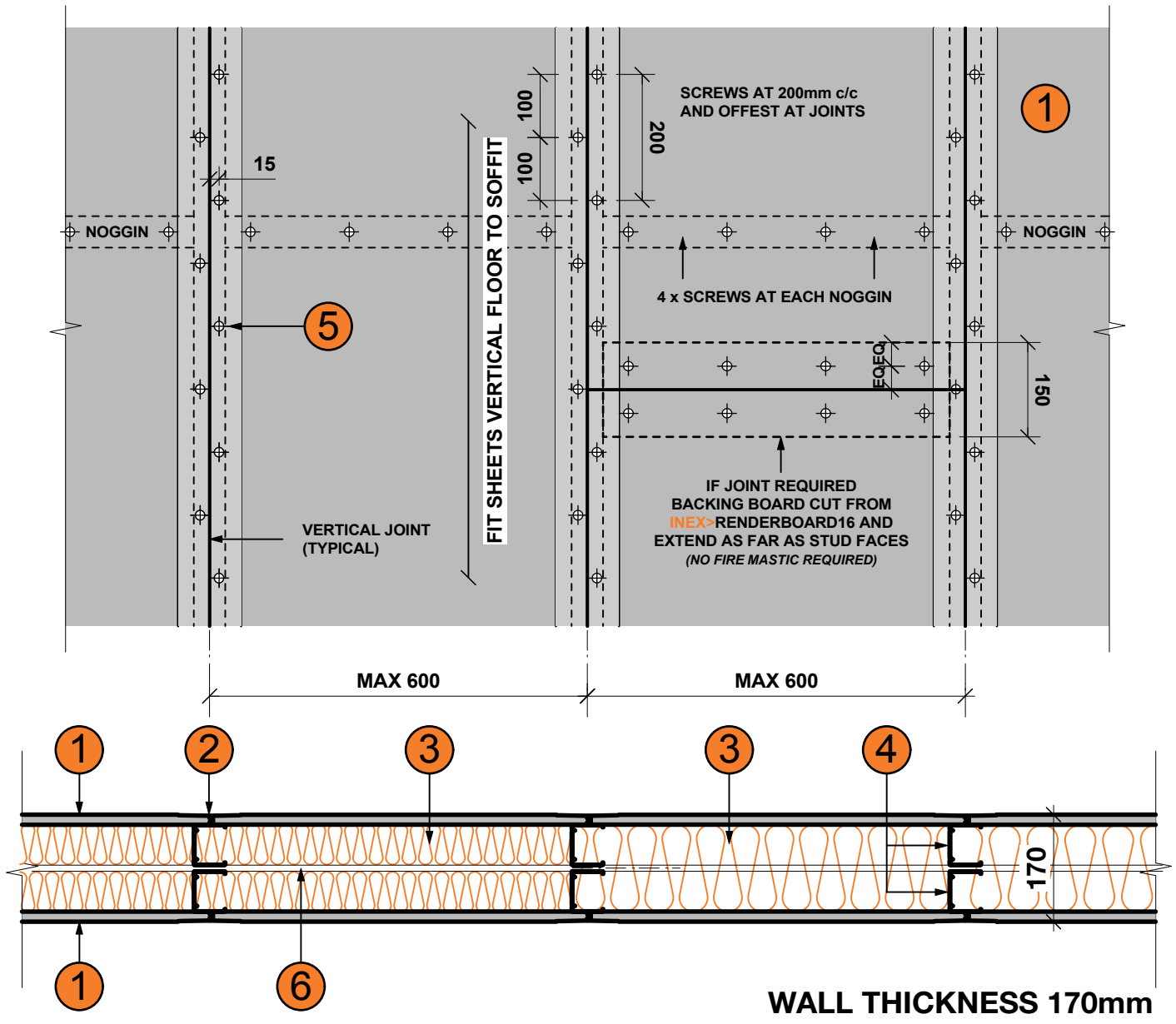
# INEX>PARTYWALL™ NLB-170



ANY BUILDING • ANY SURFACE • ANYWHERE

**STEEL FRAME: INEX>RENDERBOARD16 FRL MIN -/90/90 & Rw+Ctr 55**

MAY 2018  
Page 2



- |  |  |
|--|--|
| <p><b>1</b> 2700x600 INEX&gt;RENDERBOARD16<br/>(SMOOTH SIDE OUT &amp; WITH RECESSED EDGES)</p> <p><b>2</b> RECESSED EDGE: TAPED/SET JOINT<br/>(NO FIRE SEALANT REQUIRED)</p> <p><b>3</b> OPTIONS FOR INSULATION<br/>(SEE TABLE PAGE 3)</p> | <p><b>4</b> 64x50 0.75 BMT STEEL STUD FRAME<br/>(BY STUDCO BUILDING SYSTEMS, OR SIMILAR)</p> <p><b>5</b> 8 GAUGE WING TEK SCREWS, MIN CLASS 3</p> <p><b>6</b> MIN 10mm GAP</p> |
|--|--|

**NON-LOAD BEARING / DISCONTINUOUS CONSTRUCTION  
CLASS 2, 3 OR 4 PART BUILDING, TYPE A CONSTRUCTION  
INTERTENANCY WALLS AND COMMON WALLS – CAVITY SERVICES BOTH SIDES**

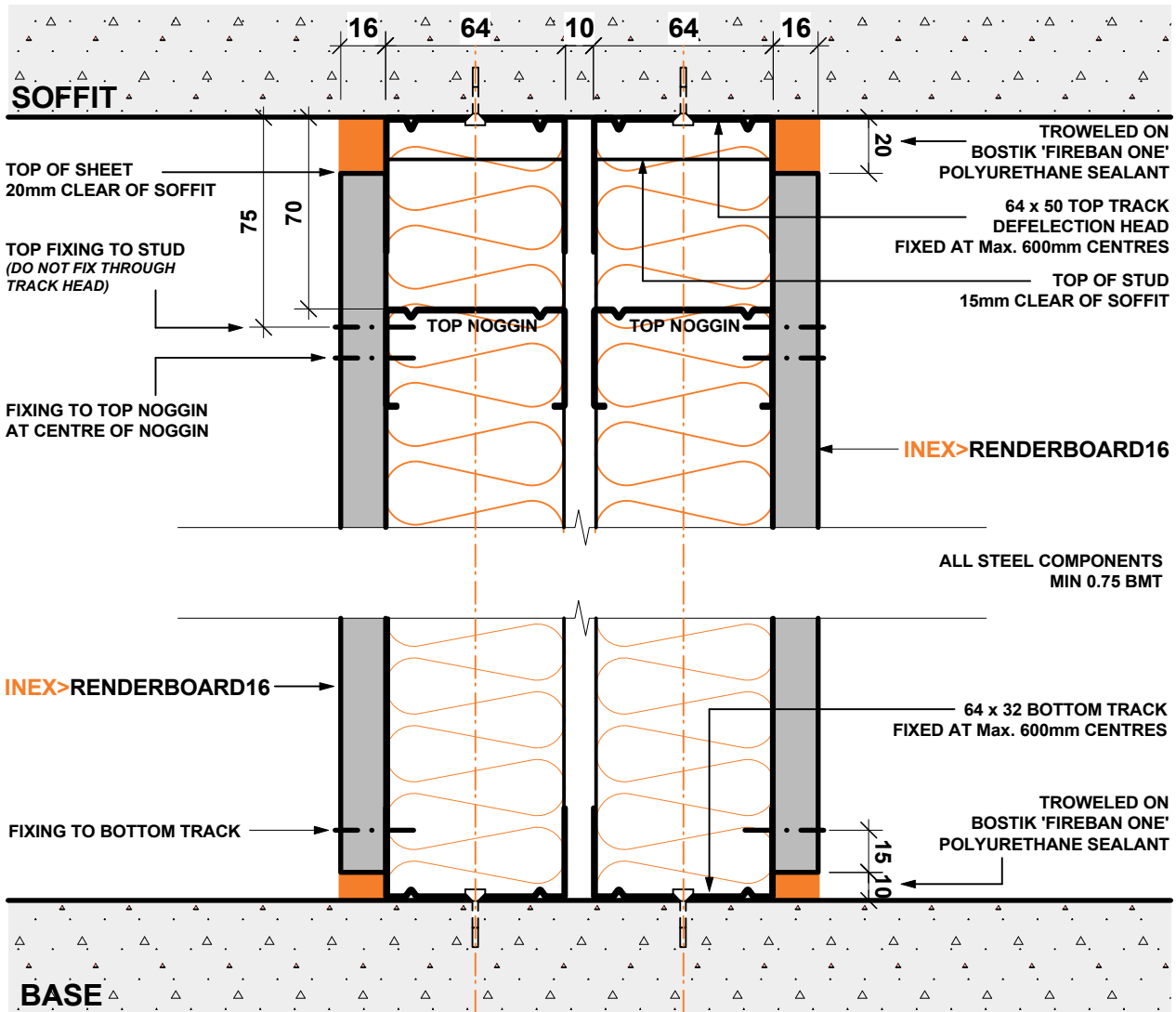
# INEX>PARTYWALL™ NLB-170



ANY BUILDING • ANY SURFACE • ANYWHERE

**STEEL FRAME: INEX>RENDERBOARD16 FRL MIN -/90/90 & Rw+Ctr 55**

MAY 2018  
Page 3



## INSULATION OPTIONS

TYPE OF INSULATION	Fire Resistance Level F/R/L	Acoustic Airborne Rw/Rw + Ctr	Acoustic Services Predicted SPL
2 x min. 75mm glasswool (min. 24kg/m <sup>3</sup> ) such as - 2 x 75mm Fletchers HD Pink Batts (24kg/m <sup>3</sup> ) - 2 x 75mm CSR Bradford Acoustigard (24kg/m <sup>3</sup> )	<b>-/120/120</b> <i>Exova-RIR32994000</i>	<b>62/55</b> <i>PKA-EOS 004</i>	AAAC 5 Star Rating of <30 dBA  <i>PKA-EOS 004</i>
2 x min. 90mm glasswool (min. 20kg/m <sup>3</sup> ) such as - 2 x 90mm Knauf Earthwool (20kg/m <sup>3</sup> ) - 2 x 90mm CSR Bradford Acoustigard (20kg/m <sup>3</sup> )	<b>-/90/90</b> <i>Exova-RIR32994000</i>		
1x140mm R3.1 Knauf Earthwool (7kg/m <sup>3</sup> )			
2 x min. 90mm polyester (min. 24kg/m <sup>3</sup> ) such as - 2 x 90mm Autex HPI polyester (24kg/m <sup>3</sup> )			

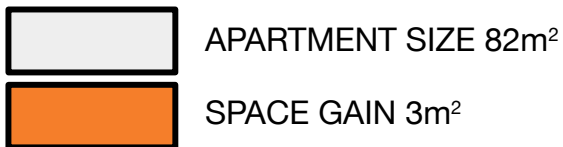
# INEX>PARTYWALL™ NLB-170



ANY BUILDING • ANY SURFACE • ANYWHERE

**STEEL FRAME: INEX>RENDERBOARD16 FRL MIN -/90/90 & Rw+Ctr 55**

MAY 2018  
Page 4



WALL SYSTEM	INTERTENANCY WALL MIN FRL -/90/90 MIN Rw+Ctr 50	EXTERNAL WALL MIN FRL -/60/60
TYPICAL AAC WALL SYSTEM THICKNESS (mm)	<b>228</b>	<b>230</b>
<b>INEX&gt;RENDERBOARD</b> SYSTEM THICKNESS (mm)	<b>170</b>	<b>135</b>

## GAIN THE SPACE – SELL/RENT THE SPACE

FOR A TYPICAL 80m<sup>2</sup> TWO BEDROOM APARTMENT  
**INEX>PARTY & INEX>EXTERNAL WALLS DELIVER**  
**AN ADDITIONAL 3.0m<sup>2</sup> INTERNAL STRATA AREA**

*(WHEN REPLACING TYPICAL INTERTENANCY AND COMMON WALLS AT 228mm THICK & TYPICAL EXTERNAL WALL AT 230mm THICK)*